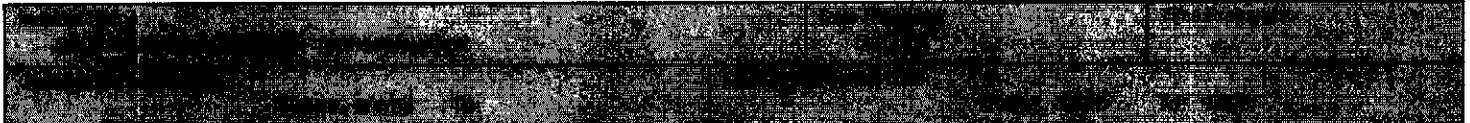


The shaded areas of this form must be filled out completely.



Task Force: (Alpha/Numeric Designation) NS TF #1	Division/Group: (Alpha/Numeric Designation) Nearshore Group	<input type="checkbox"/> Air OPS	<input checked="" type="checkbox"/> Near Shore
		<input type="checkbox"/> Offshore	<input type="checkbox"/> Onshore <input type="checkbox"/> On Land

Operation Personnel Assigned This Period

Operations Chief: Control = Steve Hood	Division/Group Supervisor: Martin Parsons
Task Force Leader: Martin Parsons	Location Assigned: Jack Bay

Resources Assigned This Period (Task Force and Strike Teams)

Personnel							
	Task Force	Major Equipment/Name of Personnel	Equipment Number/Badge Number	Transportation Needed		Drop Off/Pick-Up Time	Pick-Up/Drop Off Location
				Yes	No		
1	1	4 FV		X			
2	1	2 Mini-barges					500-2
3	1	Desmii Termite Skimmer					500-2
4	1	"U" Boom - 500'					500-2
5		(500-2 is support barge)					
6							
7							
8							
9							
10							

Task Force Job Assignment:

Perform a variation of Nearshore Free Oil tactic (N-2A, see attached formation graphic) in accordance with and in support of the Jack Bay GRS (PWS-NE08). (see attached Jack Bay GRS diagram and equipment list.)

Use the modified tactic with 4 FVs, 2 Mini-barges, and 500' containment boom.

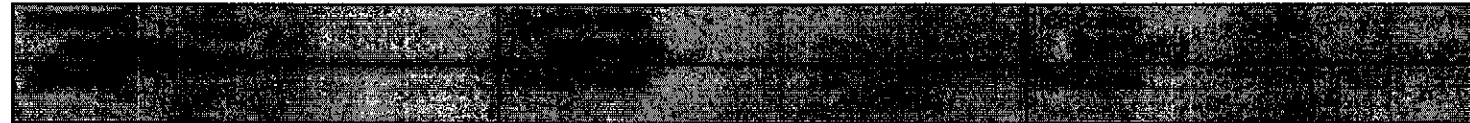
Special: All TF Leaders will attend a Safety/Ops Brief aboard the 500-2 prior to commencing work on 8/4. Equipment deployment must commence NLT 0730. Equipment recovery will commence OOA 1430. All TF personnel will attend debrief @1600 on 500-2.

Addtl Special: 500-2 will be anchored in Jack Bay on 8/3 prior to 0900. Tug crew and 5000-2 crew remain in Jack Bay overnight.

Comms: All Field Ops will communicate with Drill Control, frequency tbd.

Emergency Comms directly to SERV5 Duty office (VHF-80)

pg 1/4



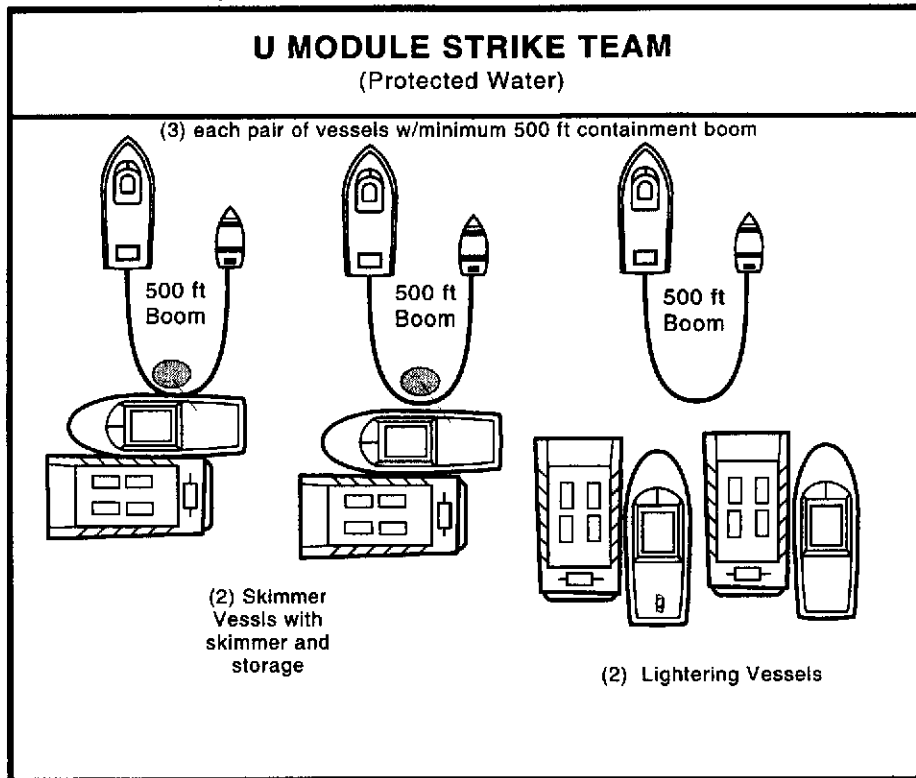


Figure 3-2. "U" Module (Protected Water) Strike Team

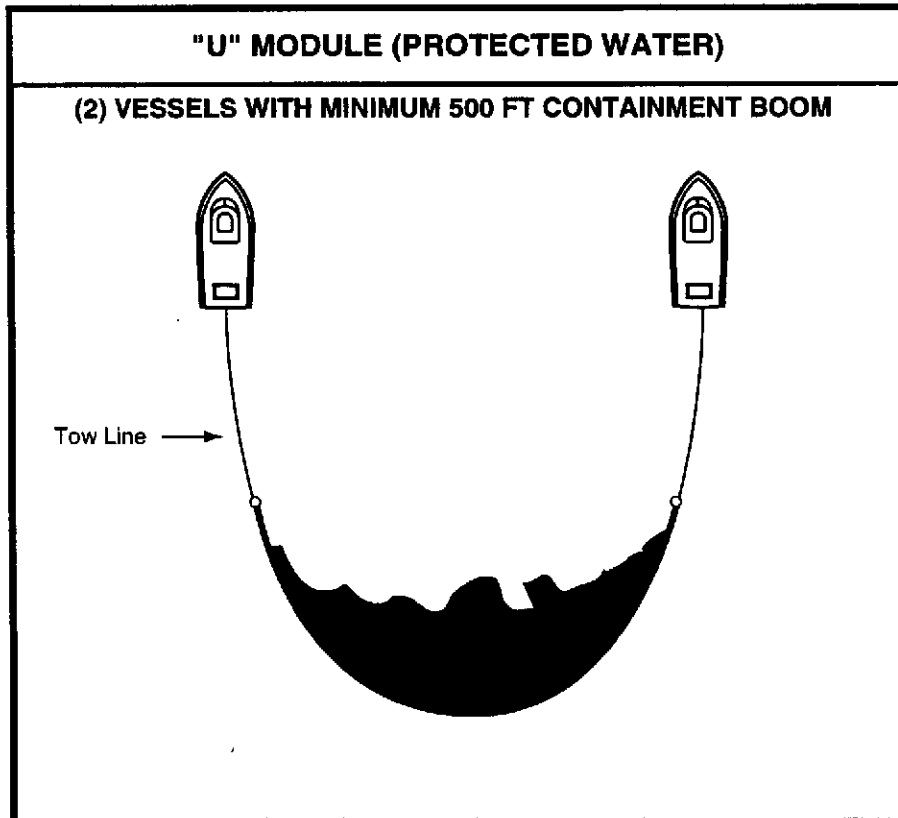


Figure 3-3. "U" Module (Protected Water)

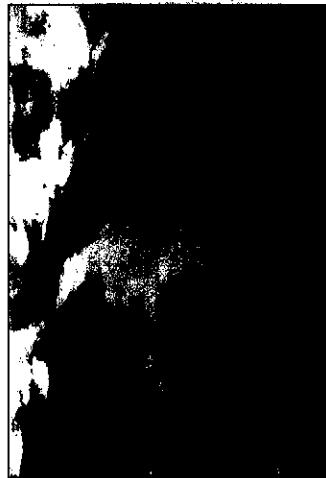
Fig 2/4



NE-08-03 Jack Bay stream viewed from the west.



NE-08-02 Jack Bay island viewed from the northwest.



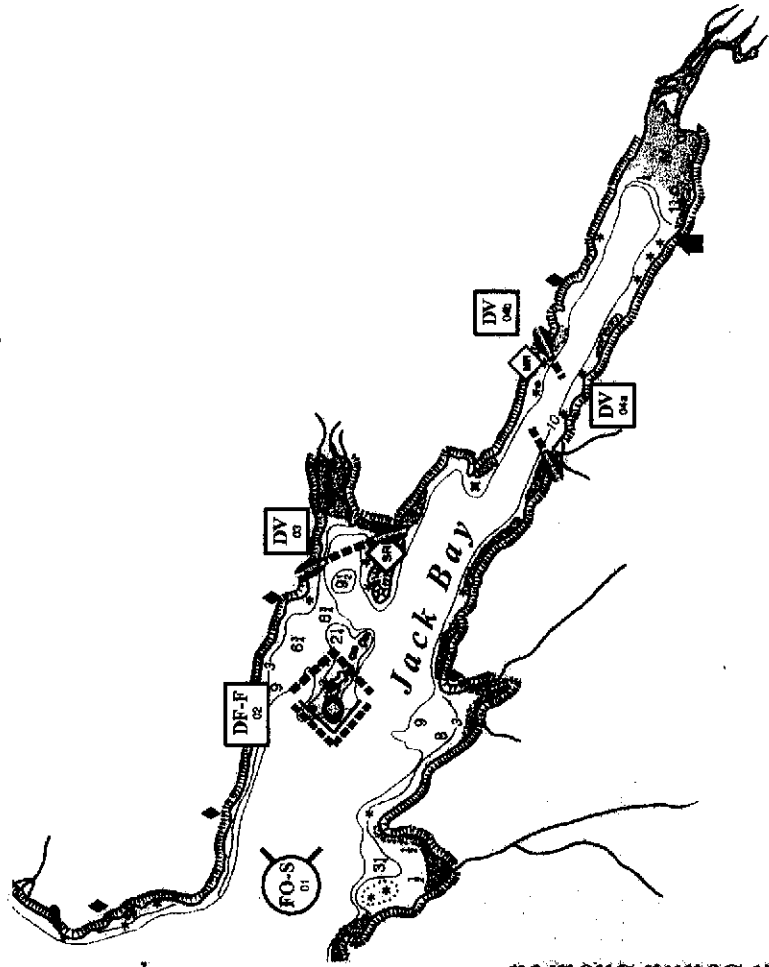
NE-08 Jack Bay viewed from the northwest.

NOTES:
Recovery resources can be adapted as appropriate for conditions.

	Free-oil Recovery, Shallow Water
	Diversion Booming
	Deflection Booming
	Marine Recovery
	Shoreside Recovery
	Protected-water Boom - Ebb Tide
	Protected-water Boom - Flood Tide
	Tidal-seal Boom
	Seabird Colony (also Seal Haulout)
	Eagle Nest
	Public Cabin

Jack Bay, PWS-NE08

Center of map at 61° 00.88' N Lat., 146° 32.21' W Lon.



Geographic Response Strategies for Prince William Sound Subarea

This is not intended for navigational use.

Soundings in fathoms

Tim L. Robertson

893/4

Prince William Sound Zone Geographic Response Strategies

ID	Location and Description	Response Strategy	Implementation	Response Resources	Staging Area	Site Access	Resources Protected (plants)	Special Considerations
PWS-NE08-01	Jack Bay Nearshore waters in the general area of: Lat. 61° 02.18 N Lon. 146° 37.60 W	Free-oil Recovery-Shallow Water Maximize free-oil recovery in the offshore & nearshore environment of Upper Jack Bay depending on spill location and trajectory.	Deploy free-oil recovery strike teams upwind and up current of Upper Jack Bay. Use aerial surveillance to locate incoming slicks. Transport equipment to site by vessel (class 2/3/4). Place boom and anchor system with fishing vessel or skiff (class 3/4/6). During flood tide position boom with an apex near the center of the boom. Maintain an adequate angle to deflect oil from the seal haulout. Reset boom for ebb tide.	Deploy multiple free-oil recovery strike teams as required to maximize interception of oil before it impacts sensitive areas.	Valdez Port Marine	Marine Chart 16708-1	Same as PWS-NE08-02	Vessel masters should have local knowledge.
PWS-NE08-02	Jack Bay Rocky Islands Lat. 61° 02.30 N Lon. 146° 36.9 W	Deflection-Fixed Deflect oil from Upper Jack Bay seal haulout and back into the channel for collection.	Transport equipment to site by vessel (class 2/3/4). Place boom and anchor system with fishing vessel or skiff (class 3/4/6). During flood tide position boom with an apex near the center of the boom. Maintain an adequate angle to deflect oil from the seal haulout. Reset boom for ebb tide.	Deployment Equipment 3000 ft. protected-water boom 4 ea. lg. anchor systems (~100 lbs.) Vessels 1 ea. class 2 (transport) 2 ea. class 3/4 1 ea. class 6 Personnel/Shift 12 ea. vessel crew Tending Vessels 1 ea. class 3/4 1 ea. class 6 Personnel/Shift 5 ea. vessel crew	Vessel platform	Marine Chart 16708-1 Contact the Tatitlek Tribal Council for local knowledge and seasonal constraints.	Marine mammals-seal haulout Habitat-marsh, eelgrass, sheltered tidal flats Fish-intertidal spawning, salmon (May-Sept), hunting (April-May) Human use-high recreational use subsistence (May-Sept), State marine park, commercial fishing Birds-seabird colony, arctic tern, black oystercatcher nesting, eagle nesting	Vessel masters should have local knowledge. Submerged rocks Shoreline icing may limit access in winter. FOSC Historic Properties Specialist should INSPECT site prior to operations. Due to land ownership and cultural sensitivity, Tatitlek residents should be offered opportunity to protect this site. Tested: not yet
PWS-NE08-03	Jack Bay N.E. Cove Lat. 61° 02.25 N Lon. 146° 34.68 W	Divert and Recovery Divert oil away from the NE Cove and collect the oil via marine recovery. Note: This tactic should be field placed based on local weather variables.	Transport equipment by vessel (class 2/3/4). Deploy anchors and boom with vessels (class 3/4/6). Place protected-water boom with tidal-seal on both ends across the identified area. Establish shoreside recovery site and begin operations. Tend throughout the tide.	Deployment Equipment 2200 ft. protected-water boom 2 section ~50 ft. tidal-seal boom 10 ea. anchor systems (~40 lbs.) 4 ea. anchor stakes 1 ea. shoreside recovery unit Vessel/Personnel/Shift Same as PWS-NE08-02 plus Tending Vessel/Personnel/Shift 3 ea. response boats for recovery Same as PWS-NE08-02 plus 3 ea. response boats for recovery	Vessel platform	Marine Chart 16708-1 Permits are likely needed for large groups.	Same as PWS-NE08-02	Private cabins may provide personnel shelter. Owner's permission required. Shoreline icing may limit access in winter. Take precautions as outlined in Part 2 of this document to protect the shoreline. Tested: not yet
PWS-NE08-04	Jack Bay S.E. Cove a. Lat. 61° 00.81 N Lon. 146° 33.44 W b. Lat. 61° 00.84 N Lon. 146° 33.20 W	Diversion-Fixed with Marine Recovery Divert oil away from Upper Jack Bay and collect via marine recovery.	Use skiffs (class 6) to deploy anchors and boom. Utilize marine recovery to collect oil. Tend throughout the tide. Boom lengths: a. 1200 ft. b. 1400 ft.	Deployment Equipment 2600 ft. protected-water boom 2 ea. < 50 ft. tidal-seal boom 4 ea. anchor stakes 13 ea. anchors (~40 lbs.) 1 ea. marine recovery unit Vessel/Personnel/Shift Same as PWS-NE08-02 Tending Vessel/Personnel/Shift Same as PWS-NE08-02	Vessel platform	Marine Chart 16708-1	Same as PWS-NE08-02	Weather could determine actual deployment order. Shoreline icing may limit access in winter. Strong local winds may occur. Tested: not yet

Handwritten signature/initials



The shaded areas of this form must be filled out completely.

Task Force: (Alpha/Numeric Designation) NS TF #2	Division/Group: (Alpha/Numeric Designation) Nearshore Group	<input type="checkbox"/> Air OPS <input type="checkbox"/> Offshore	<input checked="" type="checkbox"/> Near Shore <input type="checkbox"/> Onshore <input type="checkbox"/> On Land
---	--	---	--

Operation Personnel Assigned This Period

Operations Chief: Control = Steve Hood	Division/Group Supervisor: Martin Parsons
Task Force Leader: Judy Miller	Location Assigned: Jack Bay

Resources Assigned This Period (Task Force and Strike Teams)

Personnel							
	Task Force	Major Equipment/Name of Personnel	Equipment Number/Badge Number	Transportation Needed		Drop Off/Pick-Up Time	Pick-Up/Drop Off Location
				Yes	No		
1	2	6 FV		X			
2	2	3 skiffs		X			
3	2	Protection boom (4100')					aboard 500-2
4	2	Shoreseal boom (500')					aboard 500-2
5	2	14 Anchor kits					aboard 500-2
6		(500-2 is Command & support barge)					
7							
8							
9							
10							

Task Force Job Assignment:

Perform Jack Bay GRS tactics (PWS-NE08) with the following exceptions:

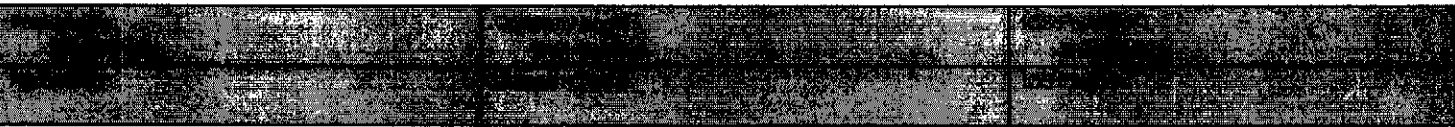
- 1- do NOT deploy Ebb Tide Deflection Booming for Rocky Island
- 2- do NOT anchor the Flood Tide Deflection Boom for Rocky Island (Perform Dynamic Deflection instead)
- 3- do NOT deploy Diversion/Recovery Booming In NE Cove (Vlaskoff Bay- DV03)

TF Leader to consult with attending ADEC rep for specific guidance while performing these tactics (see attached Jack Bay GRS diagram and equipment list)

Special: All TF Leaders will attend a Safety/Ops Brief aboard the 500-2 prior to commencing work on 8/4. Equipment deployment must commence NLT 0730. Equipment recovery will commence OOA 1430. All TF personnel will attend debrief @1600 on 500-2.

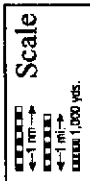
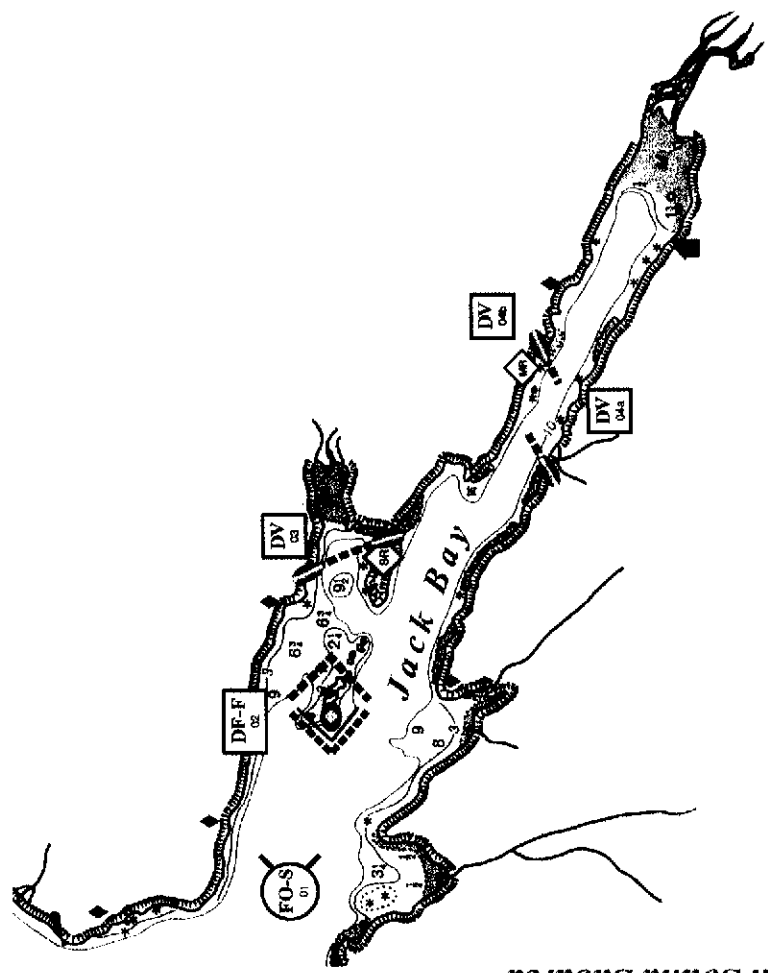
Comms: All Field Ops will communicate with Drill Control, frequency tbd.
Emergency Comms directly to SERVS Duty Office (VHF-80)

9/13



Jack Bay, PWS-NE08

Center of map at 61° 00.88' N Lat., 146° 32.2' W Lon.



This is not intended for navigational use

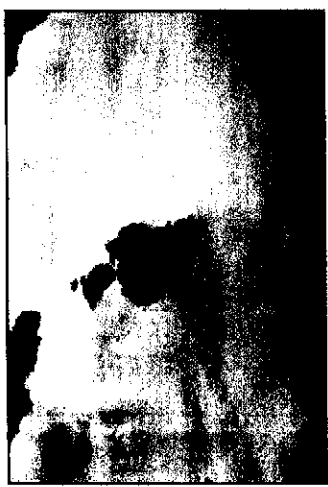
Soundings in fathoms

Tim L. Robertson

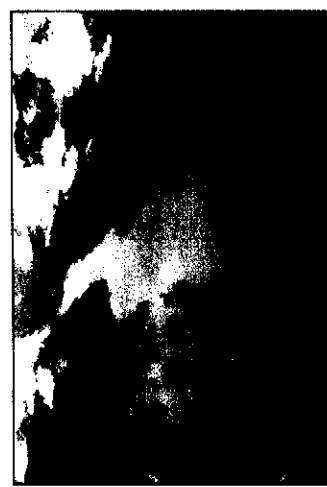
Geographic Response Strategies for Prince William Sound Subarea



NE-08-03 Jack Bay stream viewed from the west.



NE-08-02 Jack Bay island viewed from the northwest.



NE-08 Jack Bay viewed from the northwest.

- Free-oil Recovery, Shallow Water
- Diversion Booming
- Deflection Booming
- Marine Recovery
- Shoreside Recovery
- Protected-water Boom - Ebb Tide
- Protected-water Boom - Flood Tide
- Tidal-seal Boom
- Seabird Colony (also Seal Haulout)
- Eagle Nest
- Public Cabin

Map & Photo

NOTES: Recovery resources can be adapted as appropriate for conditions.

August 2003

Pg 2/3

Prince William Sound Zone Geographic Response Strategies

<p>PWS NE08-01</p>	<p>Jack Bay Nearshore waters in the general area of: Lat. 61° 02.18' N Lon. 146° 37.60' W</p>	<p>Free-oil Recovery-Shallow Water Maximize free-oil recovery in the offshore & nearshore environment of Upper Jack Bay depending on spill location and trajectory.</p>	<p>Deploy free-oil recovery strike teams upwind and up current of Upper Jack Bay. Use aerial surveillance to locate incoming slicks.</p>	<p>Valdez Port Marine</p>	<p>Marine Chart 16708-1</p>	<p>Same as PWS-NE08-02</p>	<p>Vessel masters should have local knowledge.</p>
<p>PWS NE08-02</p>	<p>Jack Bay Rocky Islands Lat. 61° 02.30' N Lon. 146° 36.9' W</p>	<p>Deflection-Fixed Deflect oil from Upper Jack Bay seal haulout and back into the channel for collection.</p>	<p>Transport equipment to site by vessel (class 2/3/4). Place boom and anchor system with fishing vessel or skiff (class 3/4/5). During flood tide position boom with an apex near the center of the boom. Maintain an adequate angle to deflect oil from the seal haulout. Reset boom for ebb tide.</p>	<p>Vessel platform</p>	<p>Marine Chart 16708-1 Contact the Tattletale Tribal Council for local knowledge and seasonal constraints.</p>	<p>Marine mammals-seal haulout Habitat-march, eelgrass, sheltered tidal flats Fish-intertidal spawning, salmon (May-Sept.), herring (April-May) Human use-high recreational use, subsistence (May-Sept.), State marine park, commercial fishing Birds-seabird colony, arctic tern, black oystercatcher nesting, eagle nesting</p>	<p>Vessel masters should have local knowledge. Submerged rocks Shoreline icing may limit access in winter. FOSC Historic Properties Specialist should INSPECT site prior to operations. Due to land ownership and cultural sensitivity, Tattletale residents should be offered opportunity to protect this site. Tested: not yet</p>
<p>PWS NE08-03</p>	<p>Jack Bay N.E. Cove Lat. 61° 02.25' N Lon. 146° 34.68' W</p>	<p>Divert and Recovery Divert oil away from the NE Cove and collect the oil via marine recovery. Note: This tactic should be field placed based on local weather variables.</p>	<p>Transport equipment by vessel (class 2/3/4). Deploy anchors and boom with vessels (class 3/4/5). Place protected-water boom with tidal-seal on both ends across the identified area. Establish shoreside recovery site and begin operations. Tend throughout the tide.</p>	<p>Vessel platform</p>	<p>Marine Chart 16708-1 Permits are likely needed for large groups.</p>	<p>Same as PWS-NE08-02</p>	<p>Private cabins may provide personnel shelter. Owner's permission required. Shoreline icing may limit access in winter. Take precautions as outlined in Part 2 of this document to protect the shoreline. Tested: not yet</p>
<p>PWS NE08-04</p>	<p>Jack Bay S.E. Cove a. Lat. 61° 00.81' N Lon. 146° 33.44' W b. Lat. 61° 00.84' N Lon. 146° 32.20' W</p>	<p>Diverses-Fixed with Marine Recovery Divert oil away from Upper Jack Bay and collect via marine recovery.</p>	<p>Use skiffs (class 6) to deploy anchors and boom. Utilize marine recovery to collect oil. Tend throughout the tide. Boom lengths: a. 1200 ft. b. 1400 ft.</p>	<p>Vessel platform</p>	<p>Marine Chart 16708-1</p>	<p>Same as PWS-NE08-02</p>	<p>Weather could determine actual deployment order. Shoreline icing may limit access in winter. Strong local winds may occur. Tested: not yet</p>



The shaded areas of this form must be filled out completely.

Task Force: (Alpha/Numeric Designation) OW TF #4		Division/Group: (Alpha/Numeric Designation) Open Water Group		<input type="checkbox"/> Air OPS	<input type="checkbox"/> Near Shore
				<input checked="" type="checkbox"/> Offshore	<input type="checkbox"/> Onshore <input type="checkbox"/> On Land

Operation Personnel Assigned This Period

Operations Chief: Control = Steve Hood	Division/Group Supervisor: Tony Day
Task Force Leader: Stan Gerhauser	Location Assigned: Jack Bay

Resources Assigned This Period (Task Force and Strike Teams)

Personnel							
	Task Force	Major Equipment/Name of Personnel	Equipment Number/Badge Number	Transportation Needed		Drop Off/Pick-Up Time	Pick-Up/Drop Off Location
				Yes	No		
1	4	TransRec Barge 450-3		X			
2	4	Tug (tbd)		X			
3	4	4 FV		X			
4	4	Ocean Boom (1850')			X		(aboard Barge)
5	4	Kepner Boom (2000')			X		(aboard Barge)
6	4	3 skimmers (2 TransRec 350's, 1 GrahamRec)			X		(aboard Barge)
7							
8							
9							
10							

Task Force Job Assignment:

Perform Open Water tactic (O-1 TR and O-3 "U") to simulate Open Water oil recovery at the entrance to Jack Bay, northward of Tongue Point. (see attached formation graphic)

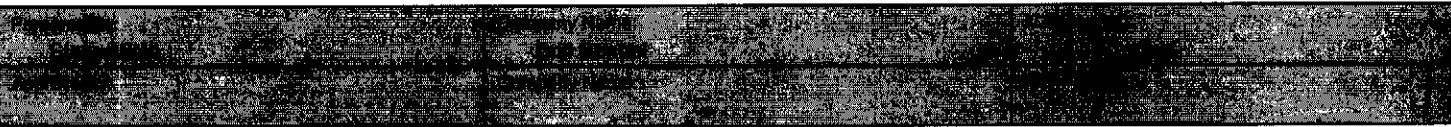
Exercise controller on-scene will provide TF Leader with information as to specific location of simulated oil.

Special: All TF Leaders will attend a Safety/Ops Brief aboard the 500-2 prior to commencing work on 8/4. Equipment deployment must commence NLT 0730. Equipment recovery will commence OOA 1430. TF/Grp Supv will conduct debrief upon completion of equipment recovery.

Comms: All Field Ops Leaders will communicate with Drill Control, frequency VHF-69 for TF#4.

Emergency Comms directly to SERVS Duty office (VHF-80)

Pg 1/2



2.5.1 Tactic O-1, TransRec/GrahamRec Task Force

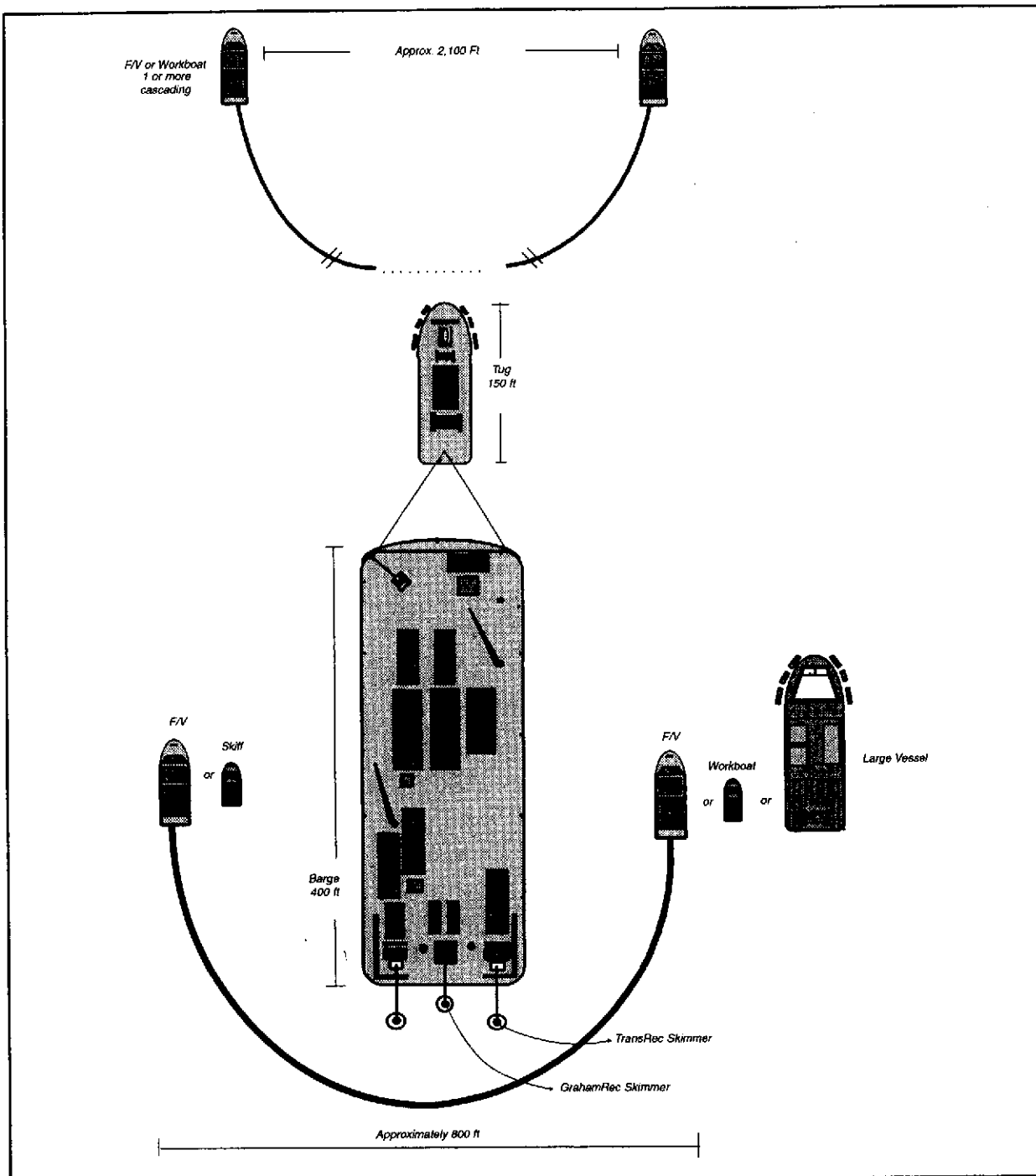


Figure 2-1. TransRec/GrahamRec task force (Task Force #1) [Tactic O-1]

NOTE

The TransRec skimmer systems can also be deployed over the berth booms to collect oil contained next to a tanker.

Pg 2/2



The shaded areas of this form must be filled out completely.

Task Force: (Alpha/Numeric Designation) OW TF #6 (Tanker booming)		Division/Group: (Alpha/Numeric Designation) Open Water Group		<input type="checkbox"/> Air OPS	<input type="checkbox"/> Near Shore
				<input checked="" type="checkbox"/> Offshore	<input type="checkbox"/> Onshore <input type="checkbox"/> On Land

Operation Personnel Assigned This Period

Operations Chief: Control = Steve Hood	Division/Group Supervisor: Tony Day
Task Force Leader: Steve Johns	Location Assigned: Jack Bay

Resources Assigned This Period (Task Force and Strike Teams)

Personnel							
	Task Force	Major Equipment/Name of Personnel	Equipment Number/Badge Number	Transportation Needed		Drop Off/Pick-Up Time	Pick-Up/Drop Off Location
				Yes	No		
1	6	PRT or ETT		X			
2	6	2 FVs		X			
3	6	Desmi Skimmer		X			(aboard Tug)
4	6	Ocean Boom (1650')		X			(aboard Tug)
5					X		
6							
7							
8							
9							
10							

Task Force Job Assignment:

Perform a variation of Open Water Booming (O-3 "U" and O-4 "J") containment with Ocean Boom down-current of the Barge 500-2 (which will be anchored in Jack Bay and simulating a stricken tanker).

Boom will be deployed from the tug. 2 FV's will be used to assist with the tactic (boom towing, etc.)

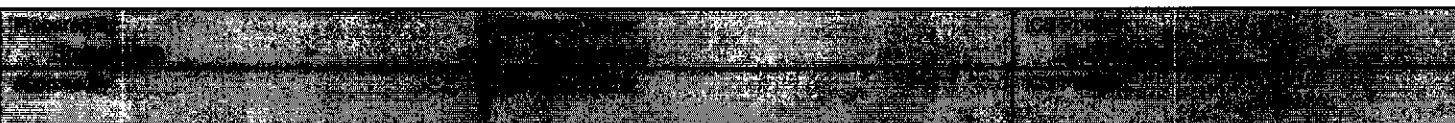
Note: the tactic will be performed after the 500-2 has deployed the Nearshore equipment to the nearshore TFs.

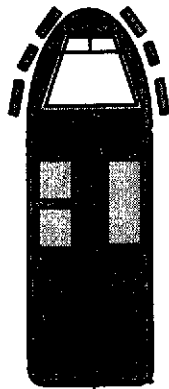
Special: All TF Leaders will attend a Safety/Ops Brief aboard the 500-2 prior to commencing work on 8/4. Equipment deployment must commence NLT 0730. Equipment recovery will commence OOA 1430. All TF personnel will attend debrief @1600 on 500-2.

Addtl Special: 500-2 will be anchored in Jack Bay on 8/3 prior to 0900. Tug crew and 5000-2 crew remain in Jack Bay overnight.

Comms: All Field Ops will communicate with Drill Control, frequency tbd.

Emergency Comms directly to SERVS Duty office (VHF-80)





Large Vessel,
Fishing Vessel
or
Work Boat



Fishing Vessel
or
Work Boat

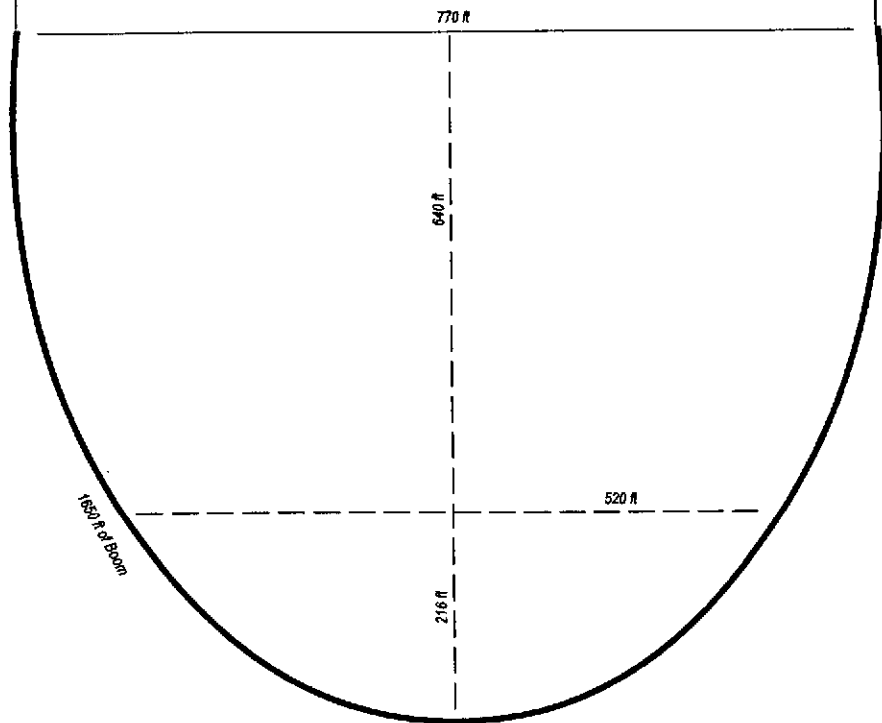


Figure 2-3. "U" Configuration (Vikoma Ocean Boom Shown)
(Vicoma is the boom currently used for the TransRec task force.
This diagram shows a typical Vikoma configuration)

Pg 2/3

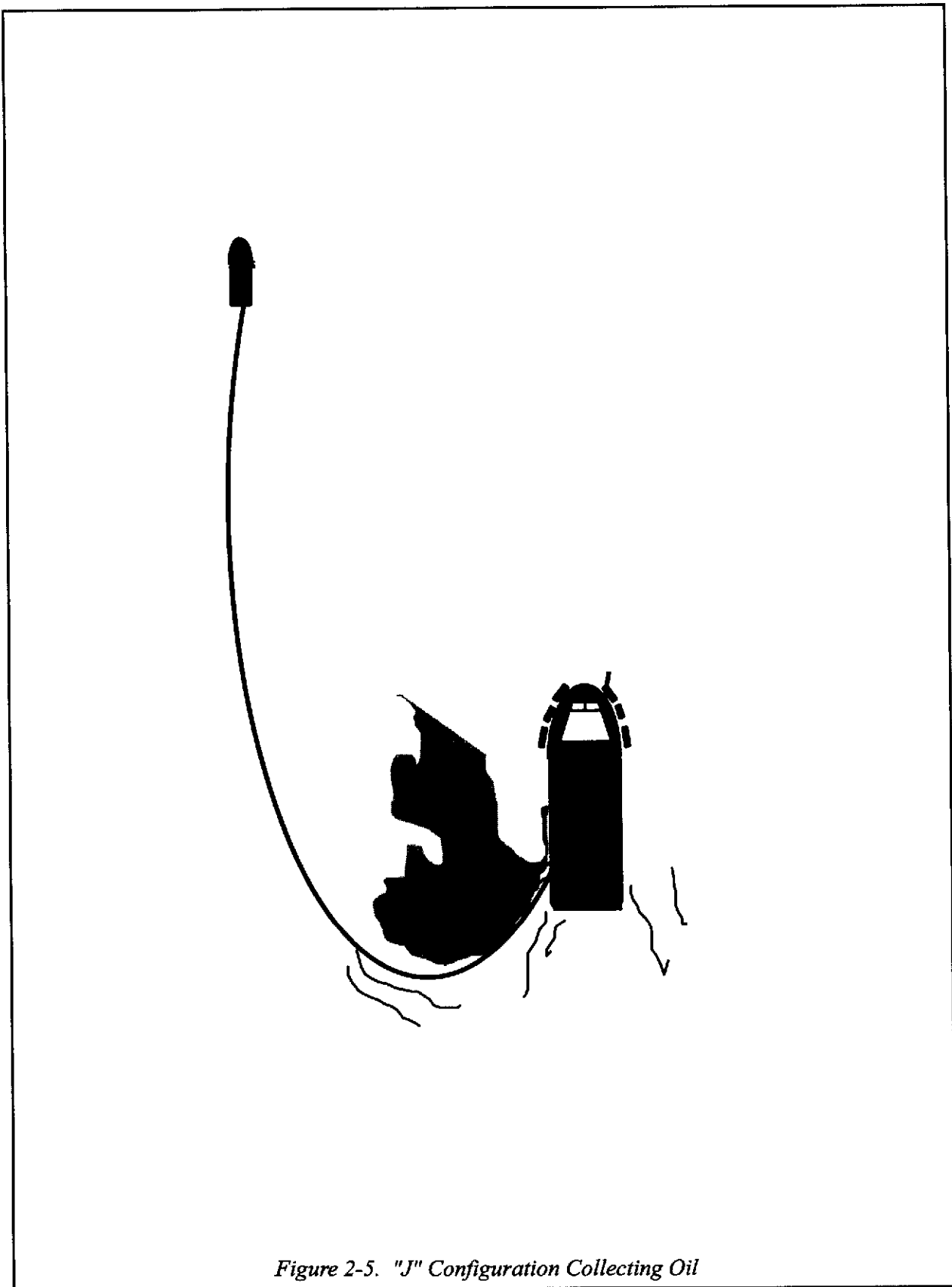


Figure 2-5. "J" Configuration Collecting Oil

Pg 3/3



The shaded areas of this form must be filled out completely.

Task Force: (Alpha/Numeric Designation) Maritime Safety TF		Division/Group: (Alpha/Numeric Designation) Maritime Safety Group		<input type="checkbox"/> Air OPS	<input type="checkbox"/> Near Shore
				<input checked="" type="checkbox"/> Offshore	<input type="checkbox"/> Onshore <input type="checkbox"/> On Land

Operation Personnel Assigned This Period

Operations Chief: Control = Steve Hood	Division/Group Supervisor:
Task Force Leader: PO Wolz, (USCG Rm at SERVS) Comm: VHF 16, 22, 83A	Location Assigned: NPREP Deployment Area near Jack Bay

Resources Assigned This Period (Task Force and Strike Teams)

Personnel							
	Task Force	Major Equipment/Name of Personnel	Equipment Number/Badge Number	Transportation Needed		Drop Off/Pick-Up Time	Pick-Up/Drop Off Location
				Yes	No		
1	MS	CGC Long Island: SZ Enforcement	Comms: VHF 16, 22, 83A	X			
2	MS	MSO Valdez 27' Safeboat: SZ Enforcement	Comms: VHF 16, 22, 83A	X			
3	MS	CG Auxiliary 27611: SZ Patrol	Comms: VHF 16, 22	X			
4	MS	P/V Arctic Mist: transportation	Comms: VHF 16, 22	X			
5	MS	P/V Fantaise: SZ Patrol	Comms: VHF 16, 22	X			
6	MS	CGC Sycamore: VIP/Observer tour	Comms: VHF 16, 22, 83A	X			
7							
8							
9							
10							

Task Force Job Assignment:

1, 2: Enforce Maritime Safety Zone from the entrance of the Valdez Narrows to Rocky Point. Remain in the vicinity of the 4.5nm, 1000 yard maritime safety zone to intercept vessels not participating in the 2004 PWS Area Exercise

3, 5: Patrol Maritime Safety Zone from the entrance of the Valdez Narrows to Rocky Point. Remain in the vicinity of the 4.5nm, 1000 yard maritime safety zone to intercept vessels not participating in the 2004 PWS Area Exercise

4: Provide any needed transportation services.

6: Transport VIPs and Observers to view the real time equipment deployment. Onboard APSC guide provides explanation of deployment processes and capabilities.

Special Instructions: Wear proper PPE. Follow Safety Guidelines relative to each vessel

