

6. Sport Fishing and Hunting

Brown and black bears concentrate in coastal marshes from April to mid-June to feed on the newly emergent sedges and grasses. They are commonly hunted in these coastal areas during the spring hunting season, from mid-March to end of May. A high proportion of the bear hunts are by guided hunters. Oiled beaches could interfere with these guided hunts through general fouling of the coastline and possible impacts to bears from ingestion of oiled vegetation. Popular bear hunting areas also indicate areas with potential safety issues during response to an oil spill.

Sport fishing in marine waters occurs year-round for king salmon, Dolly Varden, rockfish, and shellfish. Sport fishing for halibut is closed during January. However, fishing pressure is greatest from May to October due to calmer waters, warmer weather conditions, and more abundant sport fish in nearshore waters. The most intensively fished areas are delineated in several documents listed in Part Six, Key References.

7. Recreational Sites and Facilities

(a) Parks, Picnic Areas, and Campgrounds

National Forests Recreational sites and facilities found throughout southeast Alaska on the Tongass National Forest have been mapped on the forest's Geographic Information System. For a variety of recreation maps and information for the Tongass, see the web site at: <http://www.fs.fed.us/r10/tongass/recreation/recreation.shtml>. A recreation map is also available (see back pocket [Note: *Available in Final Southeast SCP*]). For information contact:

Forest Supervisor, Tongass National Forest, KTN	228-6281
Admiralty National Monument, Juneau	586-8790 or 790-7472
Craig Ranger District, Craig	826-3271 or 826-1600
Hoonah Ranger District, Hoonah	945-3631 or 945-1209
Juneau Ranger District, Juneau	586-8800 or 790-7443
Ketchikan-Misty Fjords Ranger District, KTN	225-2148 or 228-4100
Petersburg Ranger District, Petersburg	772-3871 or 772-5900
Sitka Ranger District, Sitka	747-4218
Thorne Bay Ranger District, Thorne Bay	828-3304 or 828-3210
Wrangell Ranger District, Wrangell	874-2323 or 874-7500
Yakutat Ranger District, Yakutat	784-3359

National Parks

Glacier Bay National Park and Preserve contact: Superintendent, Gustavus, 697-2230. High use recreation areas are noted below.

Upper West and East Arms of Glacier Bay. Most popular destination for all park visitors, including cruise, tour, charter and private motorboats and kayaks.

Lower Glacier Bay, including Bartlett Cove and Berg Bay. Popular for sportfishing and boating due to proximity to park headquarters at Bartlett Cove.

Beardslee Islands. Second most popular destination for sea kayaks. Also popular for small motorboats.

Hugh Miller/Scidmore/Charpentier Inlets and Adams Inlet. Popular destination for small boats, including kayaks.

Marble Islands. Most popular tour and charter boat stop for watching seabirds.

Tour boat camper drop-off points. The park designates three points where the day tour boat drops-off kayakers and campers up-bay. The sites are normally rotated after two years to allow site impacts to heal. the oil spill coordinator could get the current sites from the park.

Dundas Bay. Most popular destination for small boats and kayaks outside Glacier Bay proper.

Dry Bay/Alsek River/East Alsek River. Most use of Dry Bay is related to commercial fishing - a set gillnet fishery in the East and Alsek rivers and along the beach either side of the mouth of both rivers. A large number (1,000+) of rafters also float the Alsek River, which is tidally influenced for at least 5 miles from the mouth.

Wrangell-St. Elias National Park and Preserve contact: Superintendent, Glennallen, 907/822-5235.

Sitka National Historic Park contact: Superintendent, Sitka, 907/747-6281.

Klondike Gold Rush National Historic Park contact: Superintendent, Skagway, 907/983-2921.

State Parks The following park units have significant ocean and beach frontage, and would be adversely affected by any oil or hazardous substance in the water:

Totem Bight State Historical Park, 12 acres, T74S, R90E, CRM. A small historic site with totems and a clan house that provides excellent roadside views of Tongass Narrows, located 12 miles north of Ketchikan on the highway.

Refuge Cove State Recreation Site, 13 acres, T74S, R90E, CRM. A small sandy beach area with heavy local community use, located about 10 miles north of downtown Ketchikan.

Settlers Cove State Recreation Site, 38 acres, T73S, R90E, CRM. A very popular sandy beach area for children and adults, located about 18 miles north of Ketchikan on the road system.

Petroglyph Beach State Historic Site, 7 acres, T62S, R83E, CRM. A small beach site with ancient petroglyphs in the sand, gravel and rocky shore, located within downtown Wrangell and often a destination for tours.

Halibut Point State Recreation Site, 22 acres, T65S, R63E, CRM. A small local community park with heavy use and extensive sandy and rocky beaches, within 5 miles of downtown Sitka.

Old Sitka State Historical Park, 264 acres, T65S, R63E, CRM. A boat launch and trail system are used extensively by locals and tourists, located within 10 miles of downtown Sitka.

Point Bridget State Park, 2800 acres, T37S, R63E, CRM. A large park with extensive beaches and rocky shores along Lynn Canal 39 miles north of Juneau on the road system. Two public cabins are available for use, and one is on the shoreline.

Chilkat State Park, 6,045 acres, T30, 31, 32S, R59,60E, CRM. A large peninsula 5 miles south of Haines on the road system with camping, boat launch and trails along rocky coast line with some beaches.

Eagle Beach State Recreation Area, 640 acres, T38 & 39S, R64E, CRM. A large estuarine system of beaches and rivers located 28 miles north of Juneau on the road system.

The following Marine Parks all have good anchorages, protected waters, and good landing beaches. All of the Marine Parks are to be included as a series of anchorages that stretch the full length of the Panhandle and connect with a similar system in British Columbia.

St. James Bay State Marine Park, 10,220 acres, T37S R62E CRM. This is a large bay with several islands, coves salmon streams, and an extensive area of tideflats. The bay supports a large population of shrimp and crab that are harvested commercially. There is also an associated harbor with only a narrow passage for entry. This harbor is the site of a large hatchery release of salmon. High use.

Sullivan Island State Marine Park, 2,163 acres, T34S R61E. This park is on the southern tip of Sullivan Island which has two important anchorages and several sandy beaches. Low use.

Chilkat Islands State Marine Park, 6,560 acres, T32S R60E. T33S R61E, This is a series of islands off the tip of the Chilkat Peninsula. Low use.

Magoun Islands State Marine Park, 1135 acres, T54S R62E CRM. This park is a group of tightly knit islands with many small coves and beaches west of Sitka. There is also one large lagoon that is only accessible by boat at high tides. This area is primarily used for fishing, clamming, and hunting. Moderate use.

Big Bear/Baby Bear State Marine Park, 1023 acres, T51S R61E CRM. This park is a series of protected islands and bays in Peril Straits north of Sitka. Good fishing and hunting. Moderate use.

Grindall Island State Marine Park, 484 acres, T47S R87E CRM. This park is an isolated island west of Ketchikan that has a public use cabin on it. The area is mainly used for diving fishing, and other intertidal activities. The southern tip of the island is an established sealion haulout. Moderate use.

Dall Bay State Marine Park, 585 acres, T77S, R91E, CRM. A bay providing sheltered anchorage on Gravina Island, about 20 miles south of Ketchikan.

Thom's Place State Marine Park, 1198 acres, T66S, R86E, CRM. A bay providing sheltered anchorage on Wrangell Island, about 20 miles south of Wrangell.

Beecher Pass State Marine Park, 660 acres, T72S, R74E, CRM. A group of islands along a sheltered portion of the inland passage about 25 miles south of Petersburg.

Joe Mace Island State Marine Park, 62 acres, T64S, R75E, CRM. A small island near the community of Point Baker, used for community recreation.

Security Bay State Marine Park, 500 acres, T58S, R70E, CRM. A large bay with protected anchorages off Chatham Strait on the north end of Kuiu Island.

Taku Harbor State Marine Park, 700 acres, T44S, R70E, CRM. A large protected bay with a state-maintained float for medium sized yachts up to 60 feet, located about 35 miles south of Juneau.

Oliver Inlet State Marine Park, 560 acres, T43S, R68E, CRM. A small lagoon bay at low tide levels with a public use cabin situated on the head end of Seymour Canal. A small tram on steel rails is available to transport gear about ½ mile to the cabin from Oliver Inlet. Located about 15 miles south of Juneau.

Funter Bay State Marine Park, 162 acres, T42S, R64E, CRM. A large protected bay on the northwest end of Admiralty Island about 40 miles west of Juneau. Two floats are available for boat tie-up.

Shelter Island State Marine Park, 3560 acres, T39S, R64E, CRM. A portion of Shelter Island and two small coves with some camping facilities, within 10 miles of Juneau.

Black Sands Beach State Marine Park, 640 acres, T76S, R91E, CRM. A small beach and several islands within six miles of downtown Ketchikan.

Sealion Cove State Marine Park, 630 acres, T53S, R60E, CRM. A beautiful open coast sandy beach with a trail from Kalinin Bay, located about 35 miles north of Sitka.

Local Parks This document does not include most city or borough parks at this time. Three city park/recreation areas that were former federal surplus properties are: Shoemaker Bay Recreational Area (City of Sitka), Totem Square (City of Sitka), and Seaplane Ramp/Turnaround Site (City of Wrangell).

(b) Public Use Cabins

For information go to the internet at: <http://www.nps.gov/aplic/cabins>

(c) Wildlife viewing

There are many people, including charter and tour operators, that participate in wildlife viewing in the subarea. In addition to the parks listed above, there are sites within the Alaska Maritime National Wildlife Refuge that are visited, including:

--Saint Lazaria Island

- Hazy Island group
- Forrester Island complex

Other wildlife viewing areas include:

- Stikine River Flats
- Anan Creek
- Fish Creek (Hyder)
- Pack Creek

ALASKA STATE PARKS
Alaska Department of Natural Resources
Division of Parks and Outdoor Recreation

Alaska State Parks in the Southeast Alaska Region (maps and charts)

1. Haines
2. Juneau
3. Ketchikan
4. Sitka
5. Wrangell

Chart Key

CS = Camp sites	W = Water, drinkable	C = Cabins
CL = Camping limit	S = Picnic shelter	D = Daily parking fee
CF = Camping fee	Tr = Trails	F = Fishing
P = Picnic sites	H = Historical feature	* = Tent camping only
T = Toilet	B = Boat launch	** = Annual passes not accepted
/a = Facilities are ADA accessible		*** = Sanitary dump station

SRA = State Recreation Area	SP = State Park	DU = Day Use
SRS = State Recreation Site	SMP = State Marine Park	GU = Group Use
SHP = State Historical Park	SWP = State Wilderness Park	CG = Campground
SHS = State Historic Site	TH = Trailhead	BL = Boat Launch

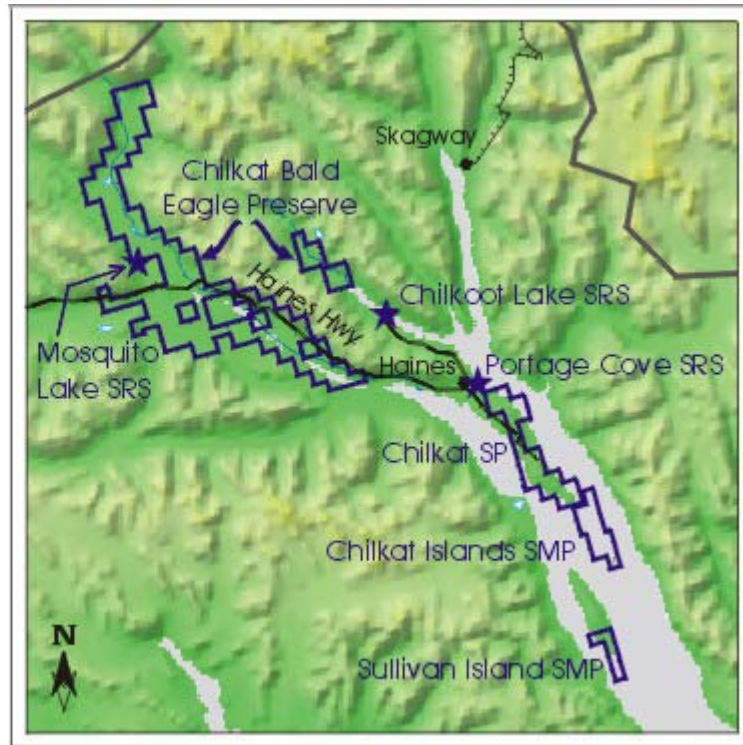
For further information: <http://www.dnr.state.ak.us>
or call 269-8700 (Anchorage Office)

To access maps and charts: <http://www.dnr.state.ak.us/parks/aspbro/statemap.htm>

Alaska State Parks near Haines in Southeast Alaska



This map is not intended to be used as a navigational aid.

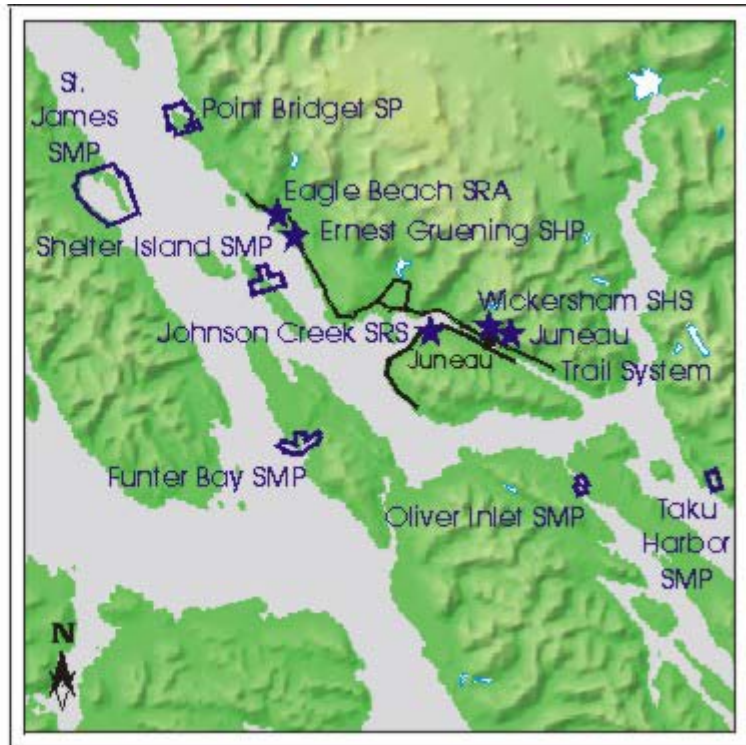


Park Unit	Acres	CS	CL	CF	P	T	W	S	Tr	H	B	C	D	F	Location
Chilkat Bald Eagle Preserve	49,320					T	W		Tr/a					F	8-30 Haines Hwy.
Chilkat Islands SMP	6,560					Undeveloped							F	No road access	
Chilkat SP	9,837	15	15	CF	4	T/a	W	S	Tr		B			F	7 Mud Bay Rd.
Chilkoot Lake SRS	80	32	7	CF		T/a	W	S			B			F	10 Lutak Rd.
Mosquito Lake SRS	10	5	15	CF		T	W				B			F	27.2 Haines Hwy
Portage Cove SRS *	7	9	7	CF	3	T	W							F	1 Beach Rd.
Sullivan Island SMP	2,163					Undeveloped							F	No road access	

Alaska State Parks near Juneau in Southeast Alaska



This map is not intended to be used as a navigational aid.

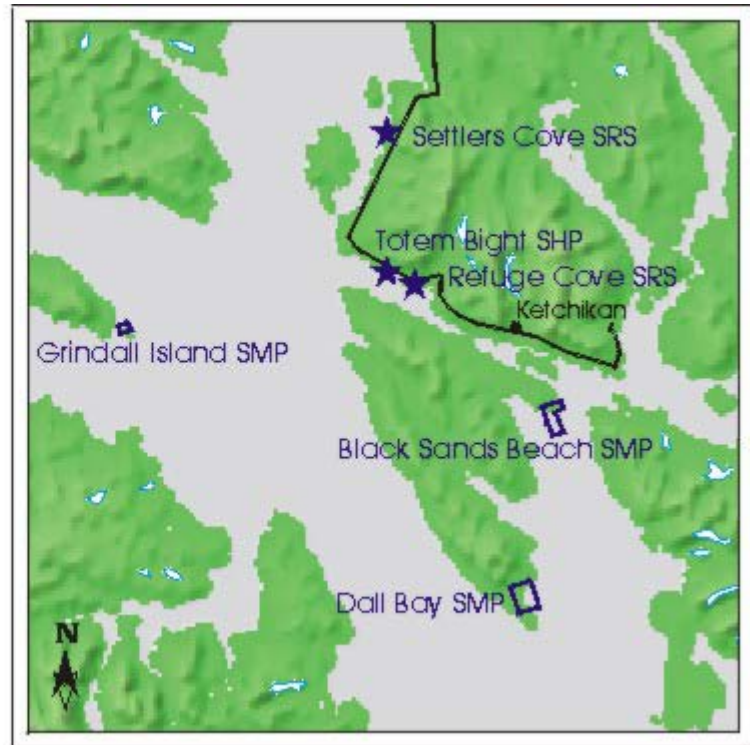


Park Unit	Acres	CS	CL	CF	P	T	W	S	Tr	H	B	C	D	F	Location
Eagle Beach SRA	590				10	T			Tr				D	F	29 Glacier Hwy.
Ernest Gruening SHP	12									H				F	24 Glacier Hwy.
Funtier Bay SMP	162				Undeveloped								F	No road access	
Johnson Creek SRS	8				Undeveloped								F	5.5 N Douglas Hwy.	
Juneau Trail System	15 mi.								Tr	H					Juneau Area
Oliver Inlet SMP	560					T			Tr			C		F	No road access
Point Bridget SP	2,800					T			Tr			C		F	38.5 Glacier Hwy.
Shelter Island SMP	3,560				6	T			Tr					F	No road access
St. James Bay SMP	1,022				Undeveloped								F	No road access	
Taku Harbor SMP	700				Undeveloped								F	No road access	
Wickersham SHS	.5					T/a				H/a					213 - 7th Street

Alaska State Parks near Ketchikan in Southeast Alaska



This map is not intended to be used as a navigational aid.

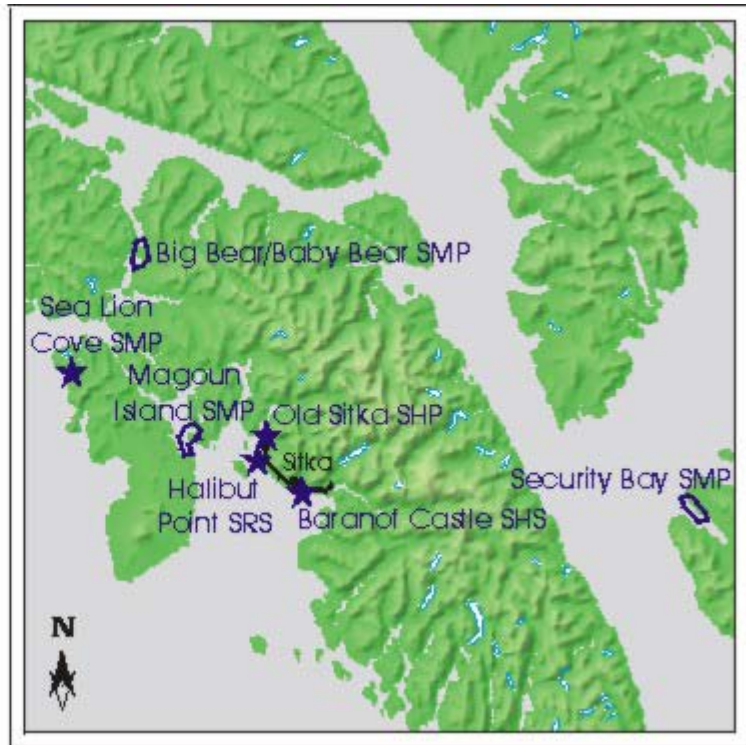


Park Unit	Acres	CS	CL	CF	P	T	W	S	Tr	H	B	C	D	F	Location
Black Sands Beach SMP	640					Undeveloped								F	No road access
Dall Bay SMP	585					Undeveloped								F	No road access
Grindall Island SMP	240					T			Tr			C		F	No road access
Refuge Cove SRS	13				14	T								F	8.7 N Tongass Rd
Settlers Cove SRS	76	14	7	CF	12	T/a	W/a	S/a	Tr/a					F	18 N Tongass Rd
Totem Bight SHP	33					T/a	W/a		Tr/a	H/a					10 N Tongass Rd

Alaska State Parks near Sitka in Southeast Alaska



This map is not intended to be used as a navigational aid.

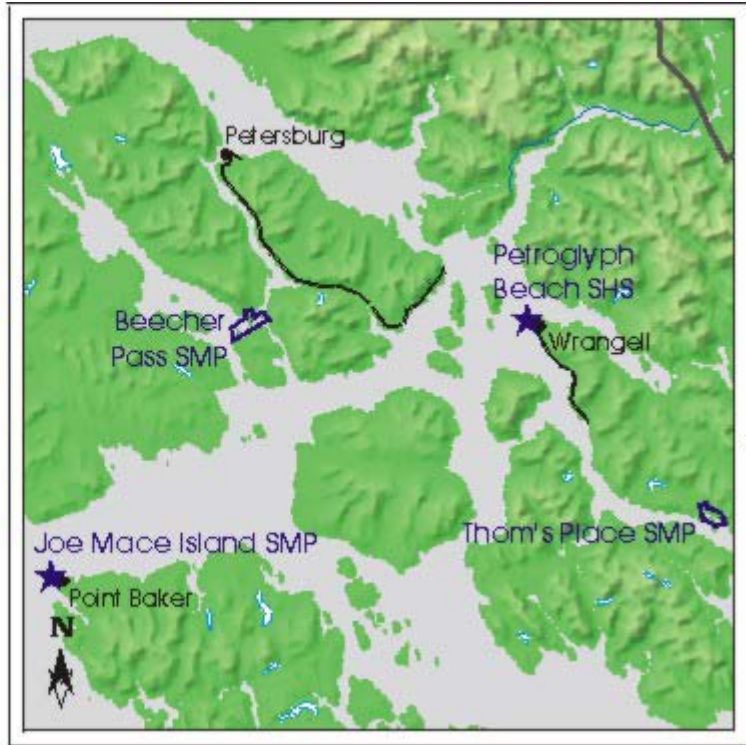


Park Unit	Acres	CS	CL	CF	P	T	W	S	Tr	H	B	C	D	F	Location
Baranof Castle SHS	1									H/a					Lincoln St.
Big Bear/Baby Bear SMP	1,023				Undeveloped								F	No road access	
Halibut Point SRS	40				9	T/a	W	S	Tr					F	4.4 Halibut Rd.
Magoun Islands SMP	1,135				Undeveloped								F	No road access	
Old Sitka SHP	212					T/a			Tr/a	H/a	B			F	7.5 Halibut Rd.
Sea Lion Cove SMP	630								Tr					F	No road access
Security Bay SMP	500				Undeveloped								F	No road access	

Alaska State Parks near Wrangell in Southeast Alaska



This map is not intended to be used as a navigational aid.



Park Unit	Acres	CS	CL	CF	P	T	W	S	Tr	H	B	C	D	F	Location
Beecher Pass SMP	660				Undeveloped									F	No road access
Joe Mace Island SMP	62				Undeveloped									F	No road access
Petroglyph Beach SHS	7								Tr	H				F	Grave St.
Thom's Place SMP	1,198				Undeveloped									F	No road access

8. Commercial Tourism

A mail survey of commercial wildlife tour operators in Southeast Alaska in 1989 documented the level and types of wildlife viewing areas important to tourism in coastal areas. There were at least 120 businesses offering wildlife viewing in the region in 1989.

The following map shows the main cruise ship routes in the region.

The following organizations can be contacted with requests for specific information on location and timing of recreation and tourism activities. Although the primary function of these organizations is not to provide such information, the individual members will be quite knowledgeable about environmental conditions and will often be willing to share information.

For additional information contact:

Alaska Division of Tourism	465-2012
Alaska State Chamber of Commerce	586-2323
Alaska Native Tourism Council	274-5400
Alaska Wilderness Recreation & Tourism Assoc.	463-3038
Tongass National Forest	747-4236

9. Marinas and Ports

(See Resources Section)

10. Fish Processing

The following table identifies fish processors, canneries, and shellfish processors operating in Southeast Alaska and provides the general location in which they operate and how to contact them. The list excludes fishing vessels and shellfish harvesters.

Craig:

Alaska Kiku at NorQuest; 826-2555
Deep Water Seafoods; 826-2632
Eat Me Seafood; 826-2632
EC Phillips & Son; 826-3241
Kahli Cove Shellfish; 321-0844
NorQuest Seafoods; 826-3241
Tenass Pass Shellfish; 463-3600

Excursion Inlet:

Ward Cove/Excursion Inlet; 586-4244

Hyder:

Alaskan Premier Seafoods; 250-636-9011

Juneau:

Alaska Glacier Seafood; 790-3590
Alaska Seafood Company; 780-5111
Carrs Quality Center; 790-5500
DIPAC Gastineau Hatchery; 463-5114
Engstrom Caviar; 586-5949
Horst's Alaska Seafood, Inc.; 790-4300
Jerry's Meats & Seafoods; 789-0173

Gustavus:

Icy Passage Fish; 697-2264
Point Adolphus Seafoods; 697-2246
The Salmon River Smokehouse; 697-2330

Haines:

Bell's Seafood; 766-2950
Cossack Caviar-Haines; 766-3495
Dejon Delights; 766-2505
Halsingland Hotel; 766-2000
Sea Pack Fisheries; 766-3521

Hoonah:

Hoonah Cold Storage; 945-3264

Ketchikan (cont.):

Gateway Smokehouse; 225-1900
Ketchikan Cold Storage; 225-6664
NorQuest Seafoods; 225-6664
S.S.R.A.A. Neets Bay; 225-1348
Sunny Cove Mariculture; 225-3751
Trident Seafoods, Corp.; 225-4191
Ward Cove Packing; 225-5030

Klawock:

Cold and Deep Seafoods at Wildfish;
212-466-0760
Golden House; 826-3027
Klawock Oceanside; 755-2102
Shrimp Shop; 755-2100
Wildfish Smokery; 755-2247

Metlakatla:

Jon K Seafood, Inc.; 780-6893
Juneau Alaskan & Proud; 586-3101
Northern Keta; 586-6095
Quality Alaska Seafoods; 789-8495
Shellfish Market; 586-1107
Super Bear Market; 789-0173
Taku Smokeries; 463-4617

Kake:

Alaska Dried Foods; 785-3130
Kake Tribal/Kake Fisheries; 785-3331
Pearl of Alaska; 723-2469

Ketchikan:

Alaska General Seafoods; 225-2906
Coastal Fisheries; 247-3327
EC Phillips & Son; 225-3121

Sitka:

Alaska Bounty Seafoods & Smokery; 966-2927
Hook & Line/Fresh Fish Co.; 747-5565
NorQuest/Sitka Facility; 206-281-7022
N.S.R.A.A. Hidden Falls Hatchery; 747-6850
N.S. R.A.A. Medvejie Hatchery; 747-6850
Seafood Producers Cold Storage; 747-5811
Sheldon Jackson Hatchery; 747-5220
Sitka Sea Farms; 747-3862
Sitka Select Seafoods; 747-5795
Sitka Sound Seafoods, Inc.; 747-6662

Wrangell:

Canoe Lagoon Oyster Co.; 329-2253
G & G Alaska Smokery; 874-3950
J.R. Fish Company, Inc.; 874-2399
Mossman Joe Oysters; 345-2273
Sea Level Seafoods, Inc.; 874-2274

Annette Island Packing; 886-4661

Wrangell Seafoods, Inc.; 874-3346

Pelican/Elfin Cove:

Elfin Cove Oysters; 239-2224

Kake Tribal/Pelican Facility; 735-2204

Patti's FP Smokers; 239-2244

Petersburg:

Coastal Cold Storage; 772-4177

Emily Island Oysters; 772-2550

Icicle/Petersburg Fisheries; 772-4294

NorQuest/Mitkof Cannery; 772-2501

NorQuest/Petersburg; 772-3333

Northern Lights Smokeries; 772-4608

Ocean Beauty Seafoods; 772-4242

Tonka Seafoods; 772-3662

Yakutat:

Dry Bay/Sitka Sound Seafoods; 747-6662

Raven's Table Smokery; 784-3392

Sitka Sound/Yakutat; 784-3392

Sitka Sound/Smokehouse; 784-3392

YKI Fisheries; 784-3671

11. Logging Facilities

All logging facilities on the Tongass National Forest are mapped on the U.S. Forest Service's Geographic Information System (GIS). See the following map.

The following organizations can be contacted with requests for specific information on location and timing of logging activities. Although the primary function of these organizations is not to provide such information, the individual members will be quite knowledgeable about environmental conditions and will often be willing to share information.

Tongass National Forest
Timber Staff Officer
Petersburg
772-5882

Alaska Forest Association
Ketchikan
225-6114

