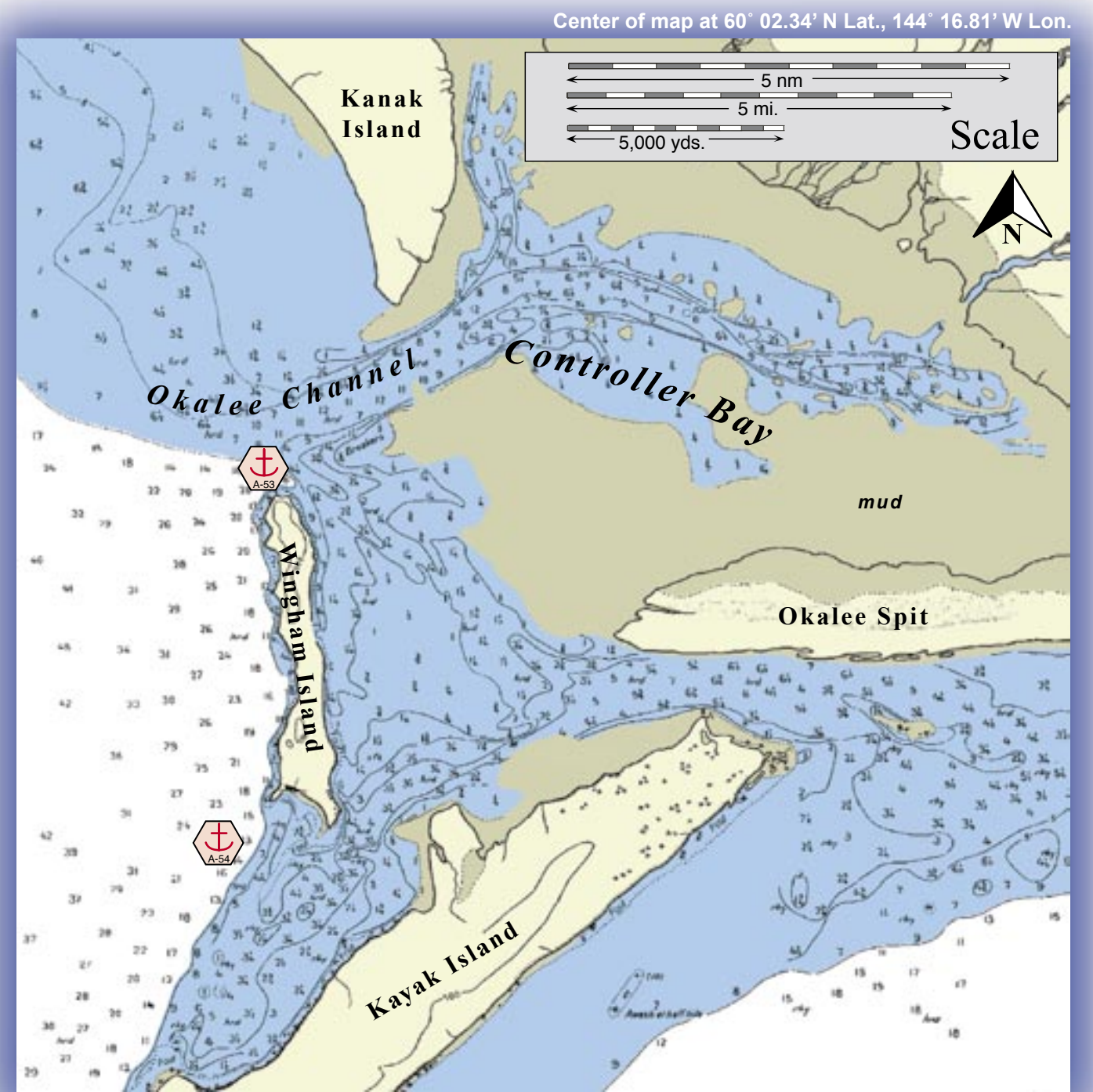


Places of Refuge

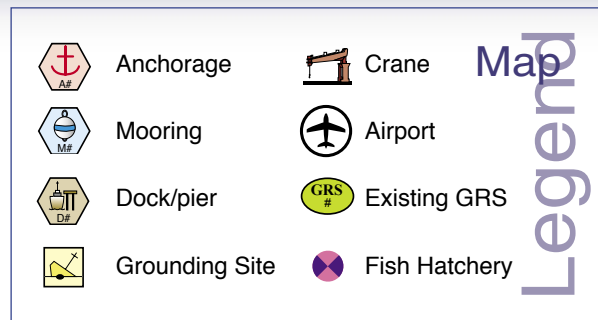


Looking southwest towards Wingham Island.

Potential Places of Refuge for Prince William Sound Subarea



This is not intended for navigational use.



PWS PPOR Map 16

PPOR-16 Okalee Channel and Kayak Entrance Anchorages Physical and Operational Characteristics		
	A53 Okalee Channel Anchorage	A54 Kayak Entrance Anchorage
Maximum Vessel Size	Light draft, up to 20,000 Gross Tons	Light draft, up to 20,000 Gross Tons
Contact	N/A	
Navigational Approach	Approach from the E.	Approach from the E.
Minimum Water Depths	11 Fathoms in the swing area	13 Fathoms in the swing area
Maximum Water Depths	20 Fathoms in the swing area	19 Fathoms in the swing area
Maximum Vessel Draft	50 ft.	60 ft.
Swing Room/Dock Face	1150 ft.	2700 ft.
Bottom Type	Hard	Hard
Docks/Piers	Nearest-D25 Cordova City Dock-64nm.	
Moorings	Nearest- M30 SERVS Buoys Port Etches-80nm.	
Anchorage	60° 03.36N 144° 23.92W	59° 59.07N 144° 24.91W
Firefighting Anchorages	Nearest Identified-A28 Port Etches Anchorage-80nm.	
Grounding Sites	Nearest Identified-G64 Constantine Harbor- 77 nm.	
Prevailing Winds	NE. (Oct-April), SW .(May-Sept.). Extreme winds are possible from the N.	
Currents	Negligible	
Tides	Mean High Water- 9.0 (Higher- 11.1) , Mean Low Water 1.4 (Lower -4.0)	
Sea Conditions	Exposed to swell from the W.	
Shelter from Severe Storms	Exposed to storms from the W.	
Fog	Fog can occur during all seasons.	
Ice	None	

PPOR-16 Wingham Island Stakeholders

	Contact	Number	Address	E-mail
U.S. Department of Agriculture, US Forest Service	CNF EVOS Liaison/ Subsistence Coordinator	(907)743-9521	3301 C Street, ste. 300 Anchorage, AK 99503	szemke@fs.fed.us
Department of the Interior	Regional Environmental Assistant	(907)271-5011	1689 C Street Anchorage, AK 99501	douglas_mutter@ios.doi.gov
National Marine Fisheries Service/ NOAA	Protected Resources Biologist	(907)271-3023	222 West 7th Ave. #43 Anchorage, AK 99513	brad.smith@noaa.gov
State of Alaska Department of Natural Resources	Natural Resource Manager	(907)269-8548	550 West 7th Ave. Anchorage, AK 99504	samm@dnr.state.ak.us
Alaska Department of Fish & Game	Habitat Biologist	(907)267-2338	333 Raspberry Road Anchorage, AK 99518	mark_fink@fishgame.state.ak.us
Prince William Sound Regional Citizens Advisory Council	Executive Director	(907)277-7222	3709 Spenard Rd. Anchorage, AK 99503	devens@pwsrccac.org
For Native allotments, contact the Department of the Interior	Regional Environmental Assistant	(907)271-5011	1689 C Street Anchorage, AK 99501	douglas_mutter@ios.doi.gov
For private landowners, contact the Alaska State Lands, Valdez Recorders Office	District Recorder	(907)835-3153	Box 2023 Valdez, AK 99686	

NOTE: In the final version of this document, the contact information will be included in Part One of the SCP and that part will be referenced in this section.

PPOR-16 Okalee Channel and Kayak Entrance Site Considerations

	A-53 Okalee Channel Anchorage	A-54 Kayak Entrance Anchorage
Human Health and Safety Considerations		
Communities – distances/population	Cordova: 76nm/pop. 2571	Cordova: 77nm/pop. 2571
Natural Resources Considerations		
Fish and Wildlife	Bald eagle and seabird nests, high waterfowl concentrations	
Threatened & Endangered Species	None noted	
Sensitive Areas	Northern Wingham Island	
Other Stakeholder Considerations		
Fisheries	Drift gill net: salmon	
Mariculture	None	
Subsistence	None noted	
Historic Property	The segment should be inspected by FOSC Historic Properties Specialist prior to or concurrent with operations.	Report Cultural Resources if discovered during operations to FOSC Historic Properties Specialist.
Tourism/Recreation	Occasional cruise ship	
Waterfront Public Facilities/Parks	None	
Waterfront Private Facilities	None	
Response and Salvage Resources Considerations		
Can Vessel Be Boomed?	Yes	
Geographic Response Strategies	PWS CRD-05	
Closest Alternative Place of Refuge	PPOR-06 D-25 Cordova City Dock: 76nm	PPOR-06 D-25 Cordova City Dock: 77nm

NOTE: Sensitive resource information can be found on other maps which can be accessed through the sensitive area section of the PWS Sub-Area Contingency Plan: <http://www.akrrt.org/PWSplan/PWStoc.shtml>.