

ALASKA STATE PARKS
Alaska Department of Natural Resources
Division of Parks and Outdoor Recreation

Alaska State Parks in the Cook Inlet Region (maps and charts)

1. Anchorage
2. Homer (Kenai Peninsula)
3. Kenai (Kenai Peninsula)
4. Palmer (Matanuska Valley)
5. Seward (Kenai Peninsula)
6. Soldotna (Kenai Peninsula)
7. Sterling (Kenai Peninsula)
8. Wasilla (Susitna Valley)

Chart Key

CS = Camp sites	W = Water, drinkable	C = Cabins
CL = Camping limit	S = Picnic shelter	D = Daily parking fee
CF = Camping fee	Tr = Trails	F = Fishing
P = Picnic sites	H = Historical feature	* = Tent camping only
T = Toilet	B = Boat launch	** = Annual passes not accepted
/a = Facilities are ADA accessible		*** = Sanitary dump station

SRA = State Recreation Area	SP = State Park	DU = Day Use
SRS = State Recreation Site	SMP = State Marine Park	GU = Group Use
SHP = State Historical Park	SWP = State Wilderness Park	CG = Campground
SHS = State Historic Site	TH = Trailhead	BL = Boat Launch

For further information: <http://www.dnr.state.ak.us> or call 269-8700 (Anchorage Office)

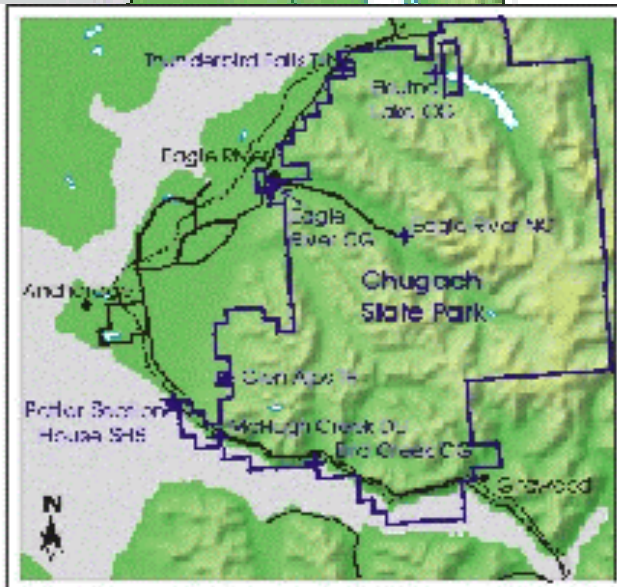
To access maps and charts: <http://www.dnr.state.ak.us/parks/aspbro/statemap.htm>

Alaska
near H
Kena

Alaska State Parks
near Anchorage



This map is not intended to be used as a navigational aid.



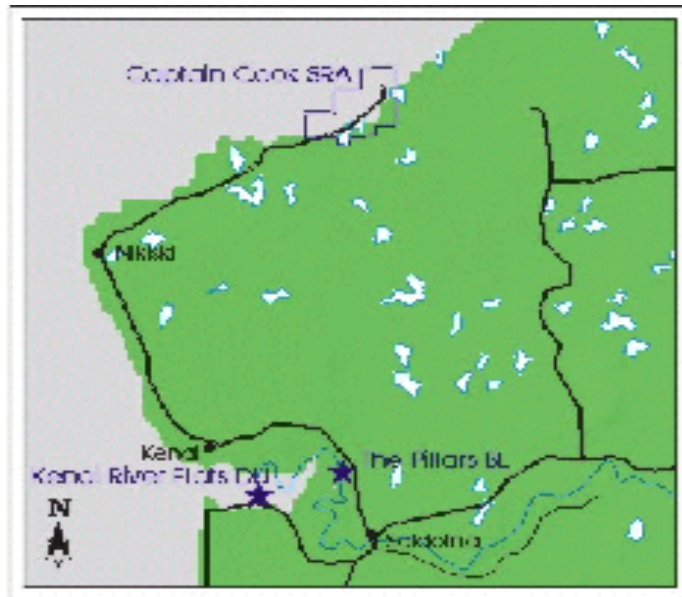
ark Unit	Acres	CS	CL	CF	P	T	W	S	Tr	H	B	C	D	F	Location
Chugach SP	495,204														
- Bird Creek CG		27	7	CF	4	Tr/a	W	S	Tr/a					F	101.2 Seward Hwy.
- Bird Ck. CG Overflow		20/a	7	CF	20	Tr/a	W/a		Tr/a					F/a	101.2 Seward Hwy.
- Bird Point DU						Tr/a	W/a		Tr/a						96.1 Seward Hwy.
- Bird Ridge TH									Tr						102.2 Seward Hwy.
- Eagle River CG ***		50/a	4	CF	12	Tr/a	W/a	S	Tr				D	F	12.6 Glenn Hwy.
- Eagle River Greenbelt						Tr/a			Tr				D	F	Eagle River Loop Rd.
- Eagle R. Nature Ctr**						Tr/a	W/a		Tr/a	H/a		C	D		12 Eagle River Rd.
- Eklutna Lake CG/GU		50	15	CF	32/a	Tr/a	W/a	S/a	Tr/a			C/a	D	F	26.5 Glenn Hwy.
- Glen Alps TH/Viewpoint						Tr/a			Tr/a				D		Upper Huffman
- McHugh Creek DU					15/a	Tr/a	W/a		Tr						111 Seward Hwy.
- North Fork Eagle Riv.						Tr/a			Tr					F	7.5 Eagle River Rd.
- Prospect Heights TH						Tr/a			Tr				D		UpO'Malley/Prospect
- Thunderbird Falls TH						T			Tr						25.5 Glenn Hwy.
- Turnagain Arm Trail									Tr						106-115 Seward Hwy
- Upper Huffman TH					8	Tr/a			Tr				D		Upper Huffman
Potter House SHS	.5				1	Tr/a				H/a					115 Seward Hwy.

Park Unit	Acres	CS	CL	CF	P	T	W	S	Tr	H	B	C	D	F	Location
Anchor River SRA	228								Tr						
- Coho CG		27	15	CF		T							D	F	157 Sterling Hwy.
- Halibut CG		21/a	15	CF	2/a	T/a	W/a			H			D	F	157 Sterling Hwy.
- Silverking CG		35	15	CF		T/a							D	F	157 Sterling Hwy.
- Slidehole CG		44/a	7	CF	2/a	T/a	W/a	S/a					D	F	157 Sterling Hwy.
- Steelhead CG		34	15	CF		T/a							D	F	157 Sterling Hwy.
Deep Creek SRA	172														
- Deep Creek CG		164	15	CF		T/a	W/a				B		D	F	138 Sterling Hwy.
- Deep Creek North CG		25/a	15	CF		T/a	W/a						D	F/a	137.3 Sterling Hwy.
- Deep Creek South DU					4/a	T/a							D	F	137.4 Sterling Hwy.
Kachemak Bay SP/SWP	370,399		15			T/a			Tr			C/a		F	No road access
Ninilchik SRA	93														
- Ninilchik Beach CG		35	15	CF		T/a	W				B			F	135.5 Sterling Hwy.
- Ninilchik River CG		43	15	CF	2/a	T/a	W/a	S/a						F	135.2 Sterling Hwy.
- Ninilchik Overlook		25/a	15	CF	2/a	T/a	W/a						D	F	135.3 Sterling Hwy.
- Ninilchik View CG ***		14	7	CF		T/a	W								135.9 Sterling Hwy.
Stariski SRS	60	13	15	CF		T/a	W	S							151 Sterling Hwy.

Alaska State Parks near Kenai on the Kenai Peninsula



This map is not intended to be used as a navigational aid.

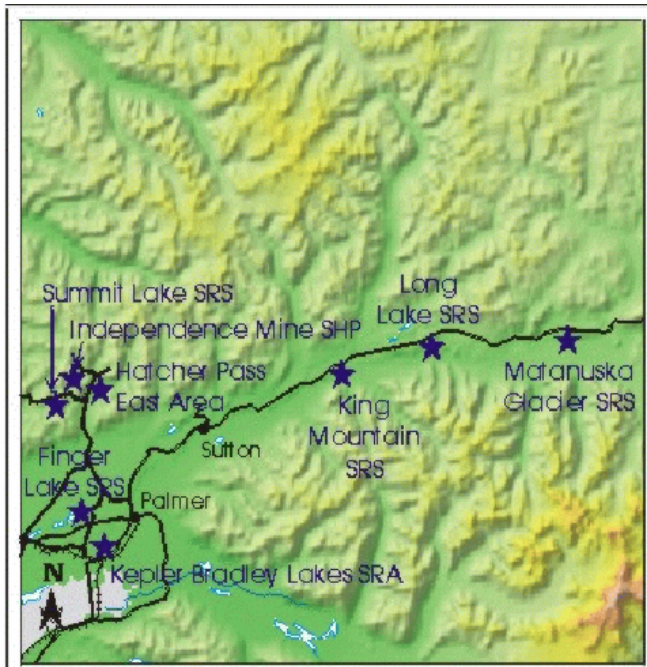


Park Unit	Acres	CS	CL	CF	P	T	W	S	Tr	H	B	C	D	F	Location
Captain Cook SRA	3,466														
- Bishop Creek DU					4	T	W/a		Tr					F	36 Kenai Spur Hwy.
- Discovery CG		52	15	CF		T	W		Tr					F	39 Kenai Spur Hwy.
- Discovery DU					6	T									39 Kenai Spur Hwy.
- Stormy Lake Beach						T	W/a							F	36.5 Kenai Spur Hwy.
- Stormy Lake BL					1	T	W/a				B			F	37.9 Kenai Spur Hwy.
- Stormy Lake DU					4	T	W/a	S/a						F	36.9 Kenai Spur Hwy.
- Swanson Riv. Landing					1	T								F	38.5 Kenai Spur Hwy.
Kenai River Special Management Area															
- Kenai River Flats DU	832					T								F	Kalifornsky Beach Rd.
- The Pillars BL **	16					T/a	W/a				B/a		D		Kenai Spur Hwy.

Alaska State Parks near Palmer in the Matanuska Valley



This map is not intended to be used as a navigational aid.

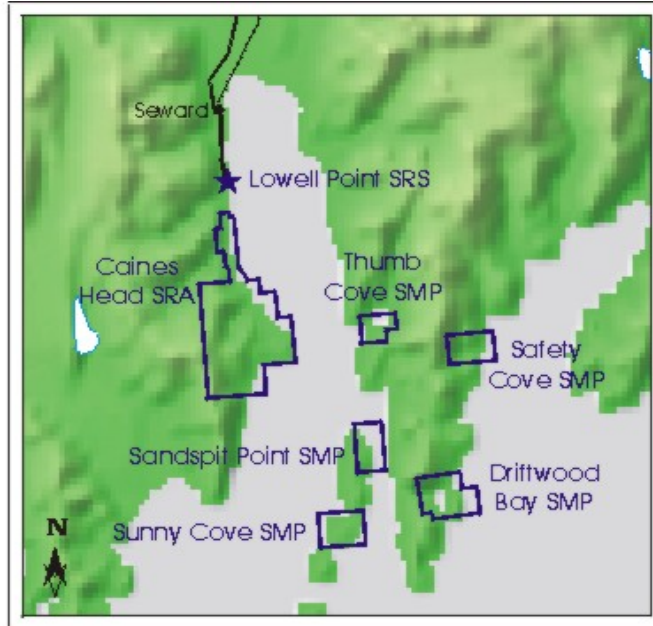


Park Unit	Acres	CS	CL	CF	P	T	W	S	Tr	H	B	C	D	F	Location
Finger Lake SRS	69	41	7	CF	10	T/a	W				B		D	F	0.7 Bogard Rd.
Hatcher Pass East Area	75,000								Tr						Hatcher Pass Rd.
Independence Mine SHP	761				10	T/a	W		Tr/a	H/a			D		17.3 Hatcher Pass Rd
Kepler-Bradley Lks SRA	346														
- Canoe Lake						T/a			Tr					F	38 Glenn Hwy.
- Irene Lake									Tr					F	38 Glenn Hwy.
- Long Lake						T/a			Tr					F	38 Glenn Hwy.
- Matanuska Lake					10/a	T/a	W/a		Tr/a					F/a	36.4 Glenn Hwy.
King Mountain SRS	20	22	15	CF	2	T	W	S							76 Glenn Hwy.
Long Lake SRS	480	9	15			T					B			F	85.3 Glenn Hwy.
Matanuska Glacier SRS	229	12	15	CF		T/a	W/a		Tr						101 Glenn Hwy.
Summit Lake SRS	360								Tr						19.2 Hatcher Pass Rd

Alaska State Parks near Seward on the Kenai Peninsula



This map is not intended to be used as a navigational aid.



Park Unit	Acres	CS	CL	CF	P	T	W	S	Tr	H	B	C	D	F	Location
Caines Head SRA	5,961	4	15		4	T		S	Tr	H		C		F	No road access
Driftwood Bay SMP	1,480						Undeveloped							F	No road access
Lowell Point SRS	19					T/a			Tr					F	2 Lowell Point Road
Safety Cove SMP	960						Undeveloped							F	No road access
Sandspit Point SMP	560						Undeveloped							F	No road access
Sunny Cove SMP	960						Undeveloped							F	No road access
Thumb Cove SMP	720	3				T/a			Tr			C/a		F	No road access

Alaska State Parks near Soldotna on the Kenai Peninsula

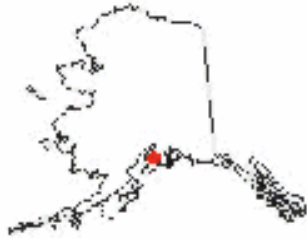


This map is not intended to be used as a navigational aid.

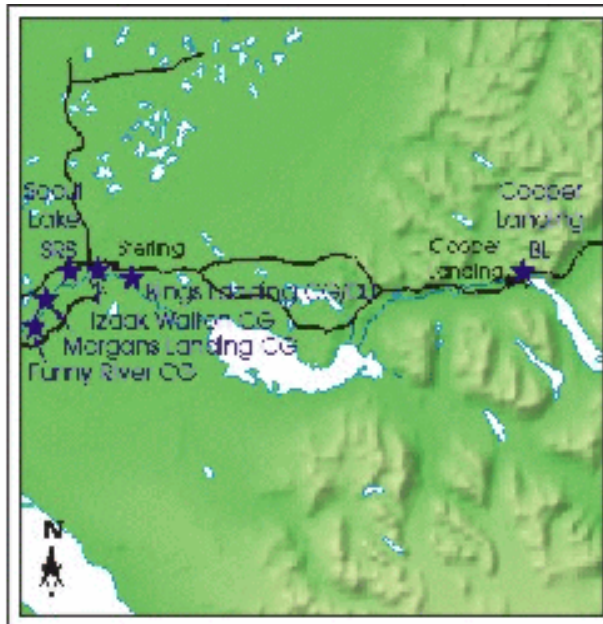


Park Unit	Acres	CS	CL	CF	P	T	W	S	Tr	H	B	C	D	F	Location
Clam Gulch SRA	495	116	15	CF		T/a	W/a	S/a					D	F	117 Sterling Hwy.
Crooked Creek SRS	105	79/a	7	CF	30/a	T	W		Tr				D	F/a	Coho Loop Rd.
Johnson Lake SRA	332	50	15	CF	25	T/a	W/a	S/a			B			F	110 Sterling Hwy.
Kasilof River SRS	30	10	15	CF		T/a	W		Tr		B		D	F	109.5 Sterling Hwy.
Kenai River Special Management Area															
- Big Eddy DU	16					T/a								F	River mile 15.5
- Ciechanski DU	34					T/a								F	River mile 16.5
- Slikok Creek DU	40				5	T/a								F	Kalifornsky Beach Rd.

Alaska State Parks near Sterling on the Kenai Peninsula



This map is not intended to be used as a navigational aid.

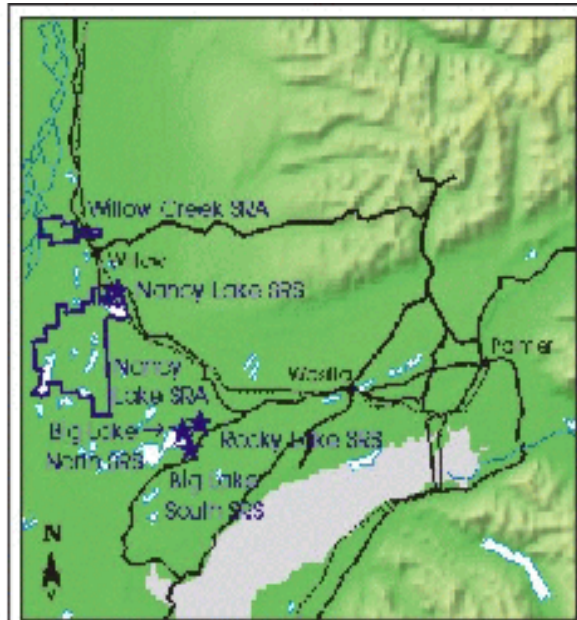


Park Unit	Acres	CS	CL	CF	P	T	W	S	Tr	H	B	C	D	F	Location
Kenai River Special Management Area															
- Bings Landing CG/DU	126	37/a	7	CF	6	T/a	W/a	S/a	Tr		B		D	F/a	79 Sterling Hwy.
- Cooper Landing BL	421					T/a	W/a				B/a		D		47.8 Sterling Hwy.
- Funny River CG	336	10	7	CF		T	W							F	10 Funny River Rd.
- Izaak Walton CG	8	26/a	7	CF	4	T/a	W/a				B			F	81 Sterling Hwy.
- Morgans Landing CG	279	42/a	7	CF	4	T/a	W/a		Tr				D	F	85 Sterling Hwy.
Scout Lake SRS	164				10	T	W	S	Tr				D	F	85 Sterling Hwy.

Alaska State Parks
near Wasilla in the
Susitna Valley



This map is not intended to be used as a navigational aid.



Park Unit	Acres	CS	CL	CF	P	T	W	S	Tr	H	B	C	D	F	Location
Big Lake North SRS	19	60	7	CF	24/a	T/a	W/a	S/a			B		D	F	5 N. Big Lake Rd.
Big Lake South SRS	22	20	7	CF	10	T/a	W				B		D	F	5.2 S Big Lake Rd.
Nancy Lake SRA	22,685											C			67.2 Parks Hwy.
- Canoe System TH						T			Tr				D	F	4.8 Nancy Lk. Pkwy.
- South Rolly Lake CG		98	15	CF	20	T	W		Tr		B		D	F	6.5 Nancy Lk. Pkwy.
- Winter TH						T			Tr				D		2.2 Nancy Lk. Pkwy.
Nancy Lake SRS	36	30	15	CF	30	T	W	S			B			F	66.5 Parks Hwy.
Rocky Lake SRS	49	10	7	CF		T	W				B			F	3.5 Big Lake Rd.
Willow Creek SRA	3,583	140	5	CF		T/a	W/a		Tr/a				D	F	70.8 Parks Hwy.

KENAI FJORDS NATIONAL PARK: SENSITIVE RECREATION SITES DATA

Site Name	Use	Latitude	Longitude
Seward Visitor Center	Visitor Contact	60°07'05"	149°26'15"
Aialik Bay Ranger Station	Visitor Contact	59°51'00"	149°39'30"
Aialik Bay Public Use Cabin	Public Use Cabin	59°53'15"	149°39'15"
Holgate Public Use Cabin	Public Use Cabin	59°49'50"	149°46'15"
Delight Public Use Cabin	Public Use Cabin	59°32'43"	150°20'09"
North Arm Public Use Cabin	Public Use Cabin	59°33'45"	150°31'20"
Bulldog Cove	Campsite	59°53'55"	149°34'15"
North Porcupine	Landing	59°52'32"	149°34'59"
Porcupine Cove	Campsite	59°51'40"	149°35'05"
Three Hole Point	Campsite	59°46'10"	149°38'45"
Bear Cove	Campsite	59°47'30"	149°36'50"
South Tooth Cove	Campsite	59°48'29"	149°38'31"
Tooth Cove	Campsite	59°49'05"	149°38'35"
North Tooth Cove	Campsite	59°50'00"	149°38'20"
South Coleman Bay	Campsite	59°51'18"	149°39'28"
Abra Cove	Campsite	59°53'50"	149°38'45"
Aialik Head	Landing	59°56'40"	149°40'59"
Pederson Lagoon Spit	Campsite	59°49'50"	149°48'00"
Quicksand Cove	Campsite	59°47'15"	149°46'05"
McMullen Cove	Campsite	59°45'50"	149°45'55"
Verdant Cove	Campsite	59°42'00"	149°44'00"
NW East Moraine	Campsite	59°44'35"	149°52'10"
Northeastern Glacier	Campsite	59°47'30"	150°01'00"
Redstone Glacier	Campsite	59°49'00"	150°02'00"
NW Otter Cove North	Campsite	59°43'50"	149°58'10"
NW Otter Cove South	Campsite	59°41'10"	149°56'40"
Paguna East	Landing	59°38'15"	150°02'28"
Paguna Head	Landing	59°41'32"	150°07'58"
Paguna West	Landing	59°39'27"	150°06'20"
Taroka East	Landing	59°37'22"	150°08'15"
Taroka West	Landing	59°37'10"	150°09'45"
Cloudy Mountain Spit	Landing	59°35'20"	150°06'40"
Thunder Bay	Landing	59°34'48"	150°10'17"

Site Name	Use	Latitude	Longitude
Chance Cove	Landing	59°34'48"	150°18'45"
Delight Spit	Campsite	59°34'48"	150°20'39"
South Desire Creek	Landing	59°34'48"	150°18'31"
Desire Creek	Campsite	59°34'50"	150°18'16"
Delusion Creek	Campsite	59°38'25"	150°16'29"
Upper McCarthy Fjord	Campsite	59°44'17"	150°12'50"
Dinglestadt Glacier	Campsite	59°39'13"	150°18'16"
James Lagoon	Campsite	59°33'39"	150°24'20"
Ariadne Cove	Campsite	59°28'27"	150°30'14"
Surprise Bay South	Landing	59°29'15"	150°29'15"
Palisade Lagoon	Campsite	59°31'45"	150°28'33"
Surprise Bay West	Campsite	59°30'20"	150°29'40"
Quartz Bay	Campsite	59°31'17"	150°31'07"
North Arm Cabin Site	Landing	59°33'45"	150°31'20"
North Arm Storm Mountain	Landing	59°35'55"	150°32'38"
Shelter Cove	Campsite	59°30'20"	150°38'09"
Shelter Cove South	Landing	59°30'00"	150°35'35"
Yalik Bay	Campsite	59°28'20"	150°39'12"
Agnes Cove	Anchorage	59°46'15"	149°34'00"
Paradise Cove	Anchorage	59°45'40"	149°35'00"
Three Hole Bay	Anchorage	59°47'00"	149°36'30"
Coleman Bay	Anchorage	59°51'45"	149°38'00"
Quicksand Cove	Anchorage	59°47'00"	149°46'30"
Verdant Cove	Anchorage	59°42'00"	149°44'50"
Northwestern Lagoon	Anchorage	59°39'38"	149°45'55"
Thunder Bay	Anchorage	59°39'08"	149°48'49"
McArthur Pass North Bay	Anchorage	59°41'50"	149°46'50"
Moonlight Bay	Anchorage	59°46'30"	149°56'45"
Midnight Cove	Anchorage	59°30'45"	150°11'00"
Desire Creek	Anchorage	59°38'32"	150°21'10"
Surprise Bay	Anchorage	59°29'15"	150°29'15"
Quartz Bay	Anchorage	59°31'00"	150°31'30"
Pilot Harbor	Anchorage	59°35'00"	150°30'00"
Shelter Cove	Anchorage	59°31'20"	150°38'09"
Fire Cove	Anchorage	59°39'38"	149°45'55"

Site Name	Use	Latitude	Longitude
Taz Basin	Anchorage	59 ⁰ 39'08"	149 ⁰ 48'49"
Crater Bay	Anchorage	59 ⁰ 41'50"	149 ⁰ 46'50"

Latitude given in degree/minute/second North and Longitude given in degree/minute/second West. Park Contact: Jeff Troutman, Chief, Resource Management Division, Kenai Fjords National Park, 907-224-3175

8. Commercial Tourism

The following organizations can be contacted with requests for specific information on location and timing of recreation and tourism activities. Although the primary function of these organizations is not to provide such information, the individual members will be quite knowledgeable about environmental conditions and will often be willing to share information.

For additional information contact:

Alaska Division of Tourism	465-2012
Alaska State Chamber of Commerce	586-2323
Alaska Native Tourism Council	274-5400
Alaska Wilderness Recreation & Tourism Assoc.	463-3038

9. Marinas and Ports

(Consult the Resources Section of this plan)

10. Fish Processing

The companies listed below are canneries and processors with permits issued by the Alaska Department of Environmental Conservation:

Anchorage

Alaska Live Crab Co.
243-0156

Alaska Sausage Co.
562-3636

10th and M Seafoods
272-3474

Alaska Smoked Salmon Int'l.
349-8234

Anchorage Cold Storage
264-0231

Aqua Tech
279-0752

Arctic Seafoods
561-5350

Central Seafoods Co.
562-0705

Favco, Inc.
278-1525

French Gourmet of Alaska, Inc.
No number

Sagaya Corp.
561-5173

Specialty Fish Products
563-5031

Teddy's Tasty Meats
562-2320

Toho America
248-6678

Trapper's Creek, Inc.
561-8088

Yamaya Seafoods
563-5588

Great Northern Sea Products, Inc.
522-4182

Great Northern Sea Products, Inc.
272-4335

North Alaska Fisheries
561-2671
Sahalee of Alaska, Inc.
349-4151

Alaskan Gourmet, Inc.
563-3752

Eagle River

Icy Bay Seafoods
696-2552

Mike's Quality Meats
696-1888

Wayward Wind Seafoods
694-2413

Halibut Cove

Saltry, Inc.
296-2223

Chenik F/V
235-6494

Homer

Alaska Custom Seafoods, Inc
235-7512

Coal Point Trading Co.
235-3877

Dragnet Fisheries
235-6023

HIS Catch Value Added Products
235-7101

Kachemak Fish Packers
235-5493

Olga Dawn at Katch Seafoods
235-4335

Sahalee of Alaska, Inc.
349-4151

Samer-I Seafoods
235-6767

Seward Fisheries, Inc.
238-8107

Katch Seafoods, Inc.
235-6241

Bay Blue Mussel Farm
235-2165

Northern Lights Oyster Co.
235-7133

Kachemak Bay Oyster Co.
235-6210

Lion of Judah F/V
235-7101

Indian

Indian Valley Meats, Inc.
653-7511

Kasilof

Ed's Kasilof Seafoods, Inc.
262-5116

R&J Seafood
283-9246

Carlson Seafoods
262-1746

Cook Inlet Processing-Kasilof
776-8174

Inlet Salomon/Inlet Fisheries
262-4730

Trans-Aqua International, Inc.
283-7322

Kenai

Alaska Choice Seafood
563-4666

The Fish Site
248-9502

Kenai Custom Seafood
283-9109

Pacific Eagle Seafoods
262-3935

Dragnet Fisheries - Kenai
283-4069

Fishhawk Fisheries of Alaska
283-3626

Inlet Fisheries, Inc.
283-9275

Pacific Star Seafoods, Inc.
283-7787

Royal Pacific Fisheries, Inc.
283-9370

Salamatof Seafoods, Inc.
283-7000

Wards Cove Packing, Co.
283-9278

Select Seafoods of Alaska
776-5498

Jaws F/V
262-2778

Nikiski

Cook Inlet Processing - Nikiski
776-8174

Pacific Alaska Seafoods, Inc.
776-8050

Ninilchik

Deep Creek Custom Packing, Inc.
567-3980

Seldovia

Eagle Rock Sea Farms
234-7498

Seward

J-Dock Fish Co.
224-7272

Smoke'n Alaska Seafoods
224-7180

Seward Fisheries, Inc./Icicle Seafoods
224-3381

Pristine Products
772-2628

Soldotna

Eagle Smokehouse
262-7007

Echo Lake Lockers
262-4155

Peninsula Processors
262-4513

Tustumena Smoke House
260-3401

Echo Lake Gourmet Meats
283-9456

Resurrection Bay Seafoods
224-3366

Wasilla

Colony Gourmet Kitchen
373-1144

11. Logging Facilities

There are no tidewater logging operations in Cook Inlet at this time.

For information concerning upland timber harvesting contact:
Kenai/Kodiak Area Forester
262-4124 (Soldotna)

12. Water Intake/Use

See Attachment One for a list of water intake/use permits was generated from a database maintained by the Alaska Department of Environmental Conservation. The list shows “type A” water users, which are those systems serving 25 or more persons using the system for 6 or more months of the year. Additional information can be obtained from the Alaska Department of Environmental Conservation at 465-5350.