

**D. HUMAN RESOURCE USES**

**1. Fish Hatcheries and Associated Ocean Net Pens**

Currently, five fish hatcheries are in the Cook Inlet Region. Four species of Pacific salmon, rainbow and lake trout, char and grayling are produced.

The Cook Inlet Aquaculture Association (CIAA) operates the Trail Lakes and Tutka Bay hatcheries, which are owned by the State of Alaska. The Port Graham Hatchery Corporation (PGHA) operates the Port Graham Hatchery. The State of Alaska (managed by the Alaska Department of Fish and Game) operates the remaining hatcheries. Hatchery locations are indicated below.

The hatchery activities most vulnerable to spill damage include fry rearing and release, terminal harvests and egg takes. However, since the timing of these activities varies by hatchery and species, it is difficult to generalize about the timing of activities, although spring and summer will tend to be the most critical periods. Hatchery managers should be contacted for specific information. Contact numbers are listed below.

For additional information on hatcheries in Cook Inlet contact:

Alaska Department of Fish and Game  
Homer  
235-8191

Alaska Department of Fish and Game  
Soldotna  
262-9368

## HATCHERIES OPERATED BY THE STATE OF ALASKA

### Hatchery, City, Phone & Operator

### Species

Ft. Richardson Hatchery  
Ft. Richardson  
428-1347/1348  
Operator: ADFG

chinook coho salmon; rainbow and trout  
lake trout, char and grayling

Elmendorf Hatchery  
Anchorage  
274-0065  
Operator: ADFG

chinook and coho

## HATCHERIES OPERATED BY PRIVATE AQUACULTURE ASSOCIATIONS

Trail Lakes Hatchery  
Moose Pass  
283-5761  
Operator: CIAA

sockeye, chinook  
and coho

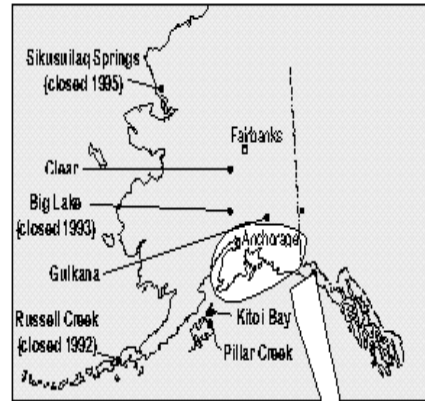
Tutka Bay Hatchery  
Homer  
235-8486  
Operator: CIAA

pink, chum and  
sockeye

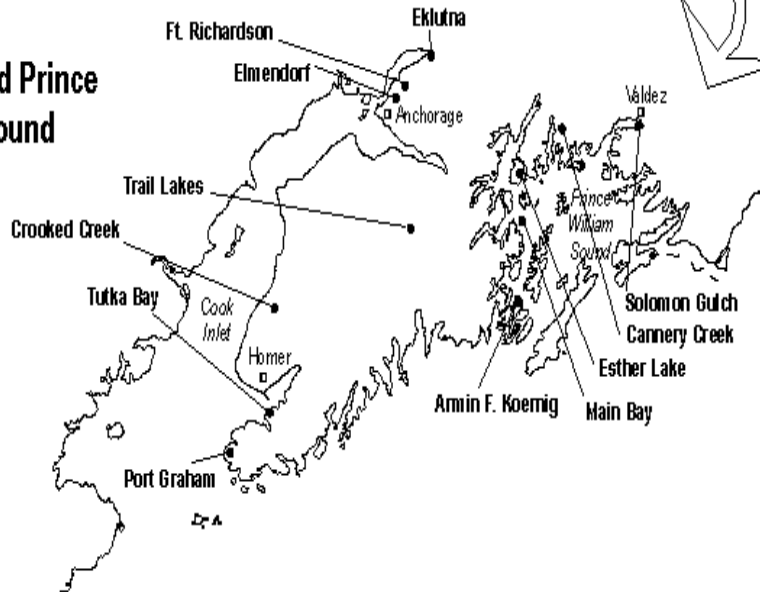
Port Graham Hatchery  
Port Graham  
284-2233  
Operator: PGHA

pink and sockeye

# Locations of Hatcheries in Prince William Sound, Interior, and Southcentral Alaska



## Cook Inlet and Prince William Sound



## 2. Aquaculture Sites

Commercial aquatic farms are concentrated in the Kachemak Bay area. These farms are primarily raising blue mussels. The number of applications for aquatic farm permits is on the rise and the number of farms may increase significantly in the near future. The locations of the 1993 permitted shellfish farms are indicated in the map and table below.

Aquatic farms are vulnerable to spill damage on a year-round basis since the shellfish are commonly suspended from anchored rafts and are continuously submerged in the water column. The timing of the harvest varies. For more information contact:

Hatchery Coordinator Juneau: 465-6152  
Mariculture Coordinator Juneau 465-6150  
Alaska Department of Fish and Game

Alaska Department of Environmental Conservation  
Anchorage: 269-7638

Alaska Department of Natural Resources  
Anchorage: 269-8546

Or go to the internet at <http://www.asgdc.state.ak.us/maps/cplans/cook/ci3aqua.pdf>

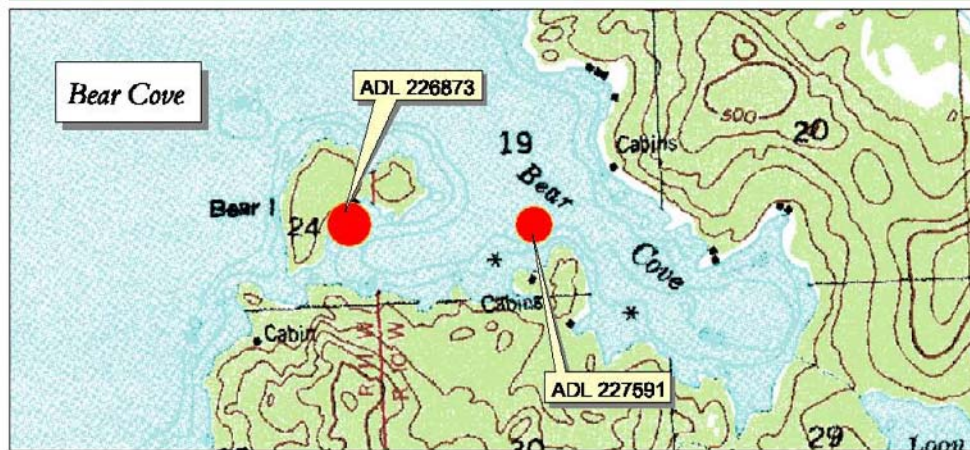
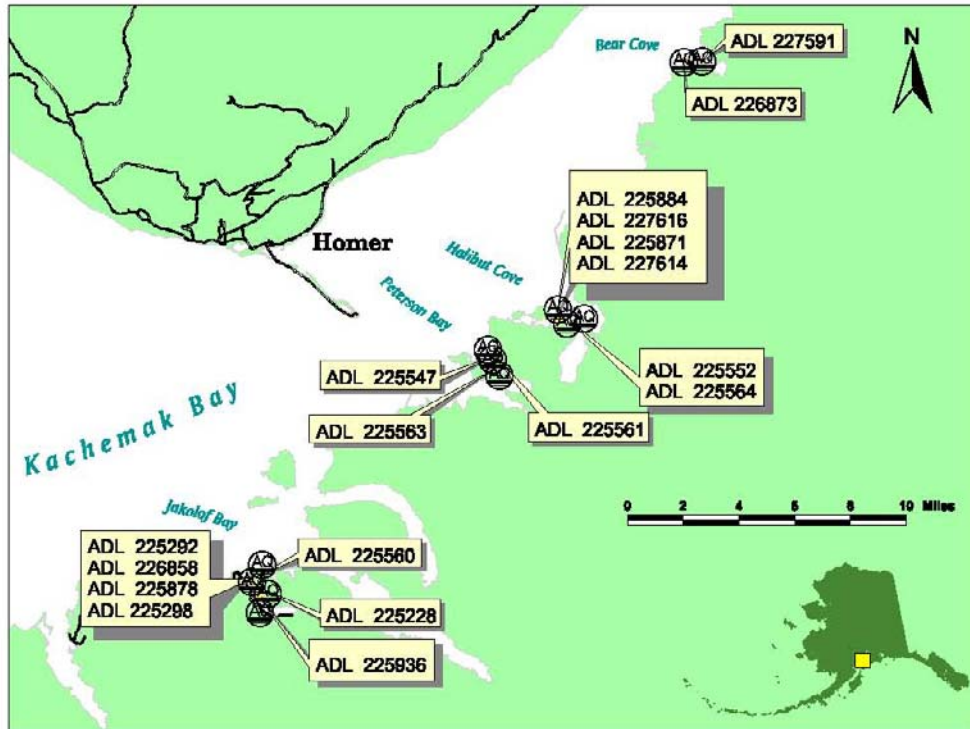


**Cook Inlet Active Aquatic Farms**  
(Alaska Department of Natural Resources)

Map Code	Company	Contact	City	Telephone
ADL 225547	Peterson Bay Oyster Co., Inc.	Robert Hartley	Kachemak Bay/Peterson Bay	235-4269
ADL 225552	Sea Farms of Alaska	Kevin Sidelinger	Kachemak Bay/Halibut Cove	235-6494
ADL 225560	Oyster Cove Seafarms	Don Fell	Kachemak Bay/Little Jakolof Bay	235-7771
ADL 225561	Seims Sea Farms	Gary Seims	Kachemak Bay/Peterson Bay	235-7156
ADL 225563	Moss Island Oyster Farm	Ronald Bader	Kachemak Bay/Peterson Bay	345-1864
ADL 225564	Snug Harbor Seafoods, Inc.	Brenda Stoops	Kachemak Bay/Halibut Cove	
ADL 225871	Ismailof Seafarms	Robert Halpin	Kachemak Bay/Halibut Cove	235-8937
ADL 225884	Halibut Cove Seafoods	Brian Miller	Kachemak Bay/Halibut Cove	
ADL 226300	Hatch Brothers	Arne Hatch	Resurrection Bay/Humpy Cove	224-3492
ADL 226553	Musselman Seafoods	Denis Douglas	Day Harbor/Day Harbor	262-6819
ADL 226563	Oyster Cove Company	Robert Linville	Resurrection Bay/Eldorado Narrows	
ADL 226566	Alaska Oyster Company	Matthew Steinberger	Resurrection Bay/Hat Island	
ADL 226864	Kachemak Shellfish Mariculture	Mark Bradley	Kachemak Bay/Halibut Cove	296-2400
ADL 226873	Bear Cove Oyster Company	John Menke	Kachemak Bay/Bear Cove	235-7905
ADL 227616	Seafarms of Alaska/ Ismailof IS Oyster Farm	Kevin Sidelinger	Kachemak Bay/Halibut Cove	296-2217

# Aquatic Farms 2001

Homer, Alaska  
Cook Inlet Region



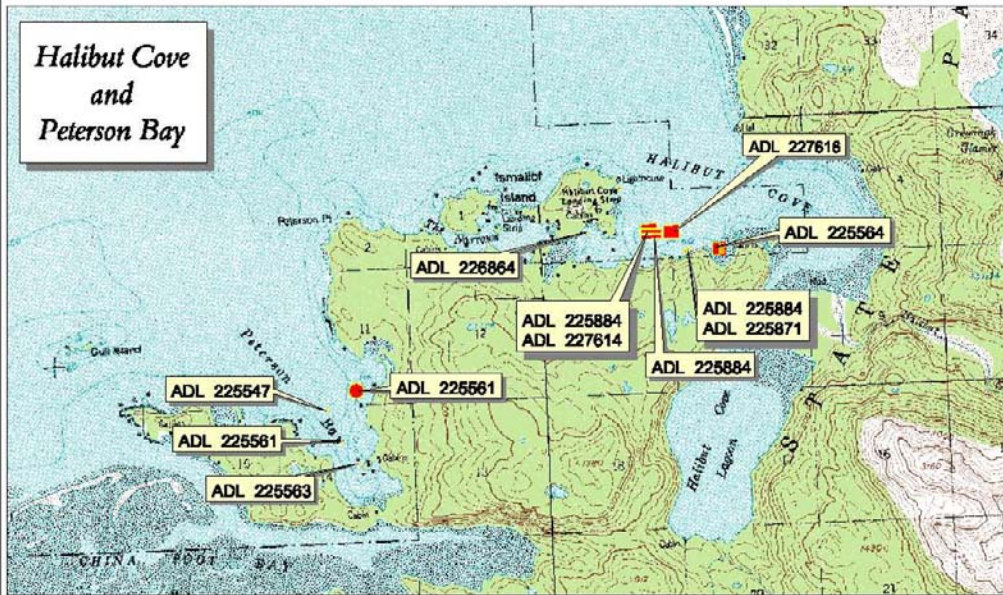
Produced by:  
Alaska Department of Natural Resources  
July 2001

Map 1 of 2

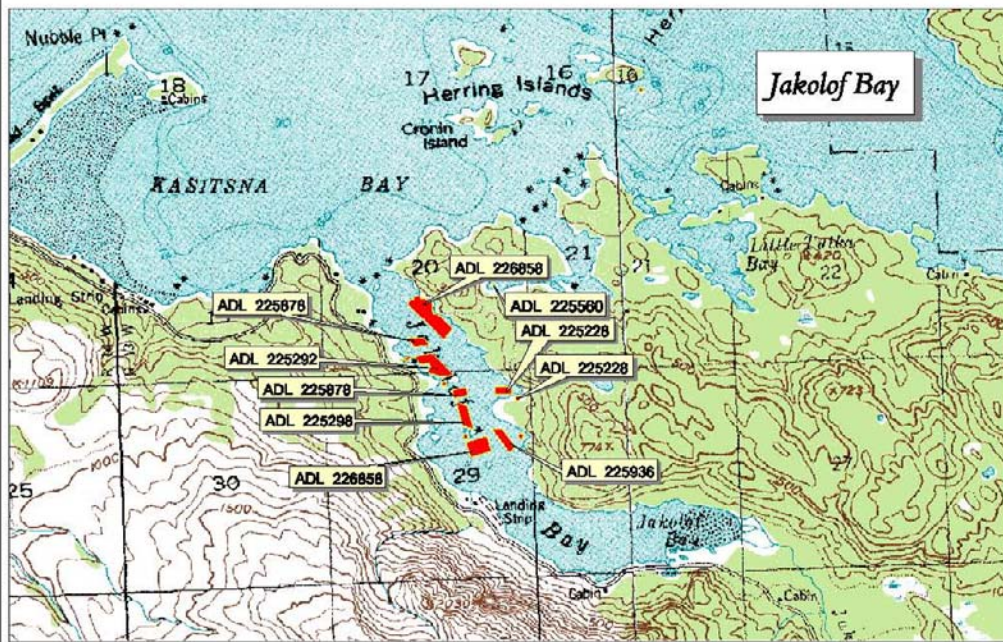
# Aquatic Farms 2001

Homer, Alaska  
Cook Inlet Region

## Halibut Cove and Peterson Bay



## Jakolof Bay

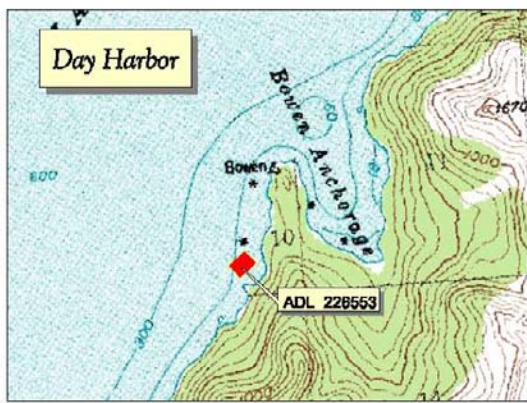
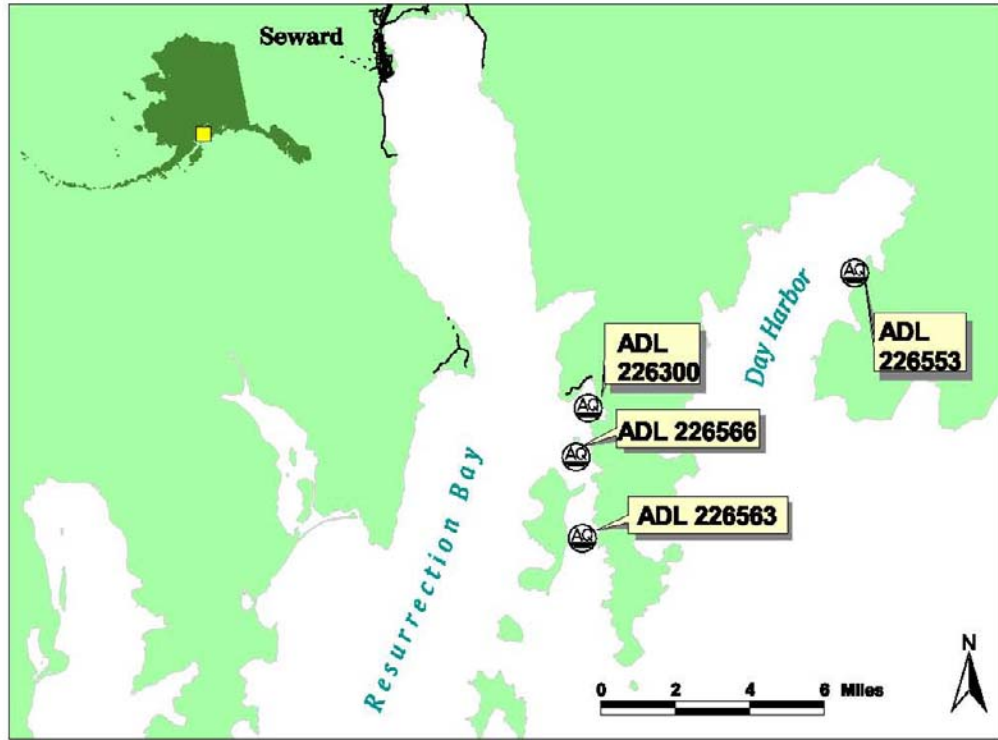


Produced by:  
Alaska Department of Natural Resources  
July 2001

Map 2 of 2

# Aquatic Farms 2001

Seward, Alaska  
Cook Inlet Region



Produced by:  
Alaska Department of Natural Resources  
July 2001

Map 1 of 1

### **3. Cultural Resources**

The Cook Inlet Subarea contains a multitude of known and unidentified archaeological and historic sites. Oil spills and hazardous substance releases may result in direct and/or indirect impacts to those cultural resources. On-Scene Coordinators (OSC) are responsible for ensuring that response actions take the protection of cultural resources into account and that the statutory requirements for protecting cultural resources are met. Annex M of the Unified Plan outlines OSC responsibilities for protecting cultural resources and provides an expedited process for compliance with Section 106 of the National Historic Preservation Act during the emergency phase of a response.

### **4. Subsistence and Personal Use Harvests**

Subsistence-related uses of natural resources play an important role in the economy and culture of many communities in the Cook Inlet Subarea. A subsistence economy may be defined as follows:

...an economy in which the customary and traditional uses of fish, wildlife and plant resources contribute substantially to the social, cultural and economic welfare of families in the form of food, clothing, transportation and handicrafts. Sharing of resources, kinship-based production, small scale technology and the dissemination of information about subsistence across generational lines are additional characteristics.

Before 1990, the State of Alaska made all decisions regarding the management of fish and wildlife resources and harvest allocation. In 1990, however, the federal government became responsible for assuring a federal subsistence priority on federal public lands and waters, and in 1999 on Federal reserved waters. The Federal Subsistence Board adopts subsistence regulations that are administered by various Federal agencies on Federal public lands. State regulations still apply on all lands, and the State is still the manager of fish and wildlife on all lands and waters in Alaska. As a consequence, the number of agencies involved in regulating subsistence uses has increased. Therefore, in the event of a spill, more extensive coordination will be required in order to address subsistence resources. Regulations regarding subsistence harvest can also be expected to undergo regular modification. Current information on harvest regulations can be obtained from the Alaska Department of Fish and Game, Subsistence Division at Anchorage: 267-2353; or the U.S. Fish and Wildlife Service Office of Subsistence Management at Anchorage: 786-3888.

For more information contact Jim Fall at the Subsistence Division of the Alaska Department of Fish and Game in Anchorage at 267-2353. Additionally, local communities should be contacted for more specific information on the locations and seasons of subsistence harvests. Contacts for potentially affected communities are identified in the Response Section, Part One.

### Cook Inlet Personal Use Harvests

Personal use harvests in Cook Inlet may potentially\* occur as follows:

#### **Salmon dip net fisheries**

Kenai River	July 10 – August 1
Kasilof River	July 10 – August 5
Fish Creek	July 25 – August 5
China Poot Creek	July 1 – August 7

#### **Coho salmon set net fisheries**

Southern district	August 16 – Sept 1
-------------------	--------------------

#### **Sockeye salmon set net fishery**

Kasilof River	June 16 – June 25
---------------	-------------------

#### **Herring fishery**

Northern and Central districts	April 1 – May 31
All other districts	all year (mostly spring)

#### **Smelt fishery**

In salt water	April 1 – May 31
In fresh water	April 1 – June 15

#### **Shrimp fishery**

all year

#### **Dungeness crab fishery**

no open season

#### **King crab fishery**

no open season

#### **Tanner crab fishery**

Lower inlet	January 15 – December 15
Kachemak Bay	January 15 – March 15, July 15 – December 15

#### **Clam fishery**

all year

**\*NOTE:** All personal use fisheries may be opened or closed by emergency order if the Alaska Department of Fish and Game ascertains that conditions warrant such actions. Also, harvest regulations and seasons can change from year to year. The dates given above indicate periods when fisheries are commonly, but not always, open.

## 5. Commercial Fishing

The following table provides seasonal information on the major commercial fisheries. It must be remembered that all fishing seasons are subject to emergency openings and closures and that most seasons are only open for a portion of the time specified in the regulations. Also, fishing regulations and seasons can change from year to year. Specific information on which species are currently being harvested may be obtained from the Alaska Department of Fish and Game's Division of Commercial Fisheries in Anchorage.

Maps of key commercial fishing areas are available in the previously referenced Alaska Department of Fish and Game publications, the Alaska Habitat Management Guide Reference Maps, Southcentral Region, Vol. 1 and 2 and the Alaska Habitat Management Guide, Southcentral Region Map Atlas.

Economically speaking, the salmon fishery is the most important commercial harvest activity. The Upper Cook Inlet sockeye drift net fishery generally brings the greatest cash return. Set net and pink salmon seine harvests are also economically significant. The Lower Cook Inlet halibut fishery is also productive. Although there has been a closure of the herring fishery since 1999 in lower Cook Inlet, a small harvest occurred in upper Cook Inlet in 2000 and 2001.

The following groups can be contacted with requests for specific information on location and timing of fish as well as local current conditions. Although the primary function of these organizations is not to provide such information, the individual members will be quite knowledgeable about environmental conditions and will often be willing to share information.

Cook Inlet Seiners Inc.  
Homer 235-2656

Kenai Peninsula Fishermen's Association  
Soldotna  
262-2492 / 262-2898

United Cook Inlet Drift Association  
Kenai  
260-9436 / FAX: 260-9438

Clams are harvested commercially in Kachemak Bay and Tuxedni Bay. Beaches that have been approved for the commercial harvest of shellfish include: Polly Creek (Cook Inlet); Crescent River (Cook Inlet); Chugachik Island (Kachemak Bay); Halibut Cove Lagoon (Kachemak Bay); Jakolof Bay (Kachemak Bay); Kasitsna Bay (Kachemak Bay); and Tutka Bay (Kachemak Bay).



## 6. Sport Fishing and Hunting

Sport Hunting and fishing activities are significant throughout the Cook Inlet subarea throughout the year. Seasons and harvest regulations vary depending on the species and area and may be changed from year to year. Contact the Alaska Department of Fish and Game for current seasons within the area of concern.

## 7. Recreational Sites and Facilities

### (a) Parks, Picnic Areas, and Campgrounds

#### STATE: Name & Nearest Community

Chugach State Park, Anchorage  
Anchor River State Recreation Area, Anchor Point  
Anchor River State Recreation Site, Anchor Point  
Stariski State Recreation Site, Anchor Point  
Big Lake North State Recreation Site, Big Lake  
Big Lake South State Recreation Site, Big Lake  
Rocky Lake State Recreation Site, Big Lake  
Kachemak Bay State Park and Wilderness Park, Homer  
Bernice Lake State Recreation Site, Kenai  
Captain Cook State Recreation Area, Kenai  
Deep Creek State Recreation Area, Ninilchik  
Ninilchik State Recreation Area, Ninilchik  
Bonnie Lake State Recreation Site, Palmer  
Finger Lake State Recreation Site, Palmer  
Kepler-Bradley Lakes State Recreation Area, Palmer  
King Mountain State Recreation Site, Palmer  
Long Lake State Recreation Site, Palmer  
Matanuska Glacier State Recreation Site, Palmer  
Moose Creek State Recreation Site, Palmer  
Summit Lake State Recreation Site, Palmer  
Wolf Lake State Recreation Site, Palmer  
Caines Head State Recreation Area, Seward  
Driftwood Bay State Marine Park, Seward  
Horsehoe Bay State Marine Park, Seward  
Safety Cove State Marine Park, Seward  
Sandspit Point State Marine Park, Seward  
Sunny Cove State Marine Park, Seward  
Clam Gulch State Recreation Area, Soldotna  
Crooked Creek State Recreation Site, Soldotna  
Johnson Lake State Recreation Area, Soldotna  
Kasilof River State Recreation Site, Soldotna  
Kenai River Special Management Area, Sterling  
Denali State Park, Talkeetna  
Montana Creek State Recreation Site, Talkeetna  
Independence Mine State Historical Park, Wasilla  
Little Susitna River Public Use Facility, Wasilla  
Nancy Lake State Recreation Area, Willow  
Nancy Lake State Recreation Site, Willow

Willow Creek State Recreation Area, Willow  
McNeil River State Game Sanctuary Campground

FEDERAL: Name & Nearest Community

*(Also, see the list of sites for Kenai Fjords National Park below on page D-99)*

Hidden Lake Campground, (FWS) Cooper Landing  
Lower Skilak Campground, (FWS) Cooper Landing  
Quartz Creek Campground, (USFS) Cooper Landing  
Russian River Campground, (USFS) Cooper Landing  
Russian River Ferry Campground, (FWS) Cooper Landing  
Upper Skilak Lake Campground, (FWS) Cooper Landing  
Begich Boggs Visitor Center, (USFS) Girdwood  
Bertha Creek Campground, (USFS) Girdwood  
Black Bear Campground, (USFS) Girdwood  
Granite Creek Campground, (USFS) Girdwood  
Tenderfoot Campground, (USFS) Girdwood  
Williwaw Campground, (USFS) Girdwood  
Tern Lake Campground, (USFS) Moose Pass  
Trail River, (USFS) Moose Pass  
Cooper Creek Campground, (USFS) Seward  
Crescent Creek Campground, (USFS) Seward  
Exit Glacier Campground/Visitor Center, (NPS) Seward  
Kenai Fjords Visitor Center, (NPS) Seward  
Porcupine Campground, (USFS) Seward  
Primrose Campground, (USFS) Seward  
Ptarmigan Campground, (USFS) Seward  
Schooner Bend Campground, (USFS) Seward  
Jim's Landing Campground, (FWS) Soldotna  
Kenail Wildlife Refuge Visitor Center, (FWS) Soldotna  
Swanson River Campground, (FWS) Sterling  
Watson Lake Campground, (FWS) Sterling

**(b) Public Use Cabins**

Information available on the Internet at:

<http://www.vacationalaska.com/info/publiclands/cabins.html>

*(Also, see the list of sites for Kenai Fjords National Park below on page D-99)*

**(c) Public Anchorages and Moorings**

*(Also, see the list of sites for Kenai Fjords National Park below on page D-99)*

Mouth of the Kenai River  
Mouth of the Kasilof River  
Mouth of Deep Creek  
Kachemak Bay behind the spit  
Halibut Cove  
Sadie Cove  
Tutka Bay  
Kasitsna Bay  
Jakolof Bay